

ISSUE OF SHARES ON EXERCISE OF QUOTED OPTIONS

Northern Cobalt Limited advises that it has issued 5,000 ordinary shares upon the exercise of quoted options. The options have an exercise price of \$0.20 and expiry of 14 September 2019.

An updated Appendix 3B seeking quotation of the shares is attached to this announcement.

Webinar

Reminder to **join our newsletter** for invitations to our regular **Q&A Webinars** and latest releases via our website www.northerncobalt.com.au

For further information please contact:

Michael Schwarz

Managing Director, Northern Cobalt Ltd

M: +61 402 101 790

E: mschwarz@northerncobalt.com.au

CAPITAL STRUCTURE

Ordinary Shares
Issued 50.8 M

Options
Listed 6.3 M @ 20c
Unlisted 12.3 M @ 25c

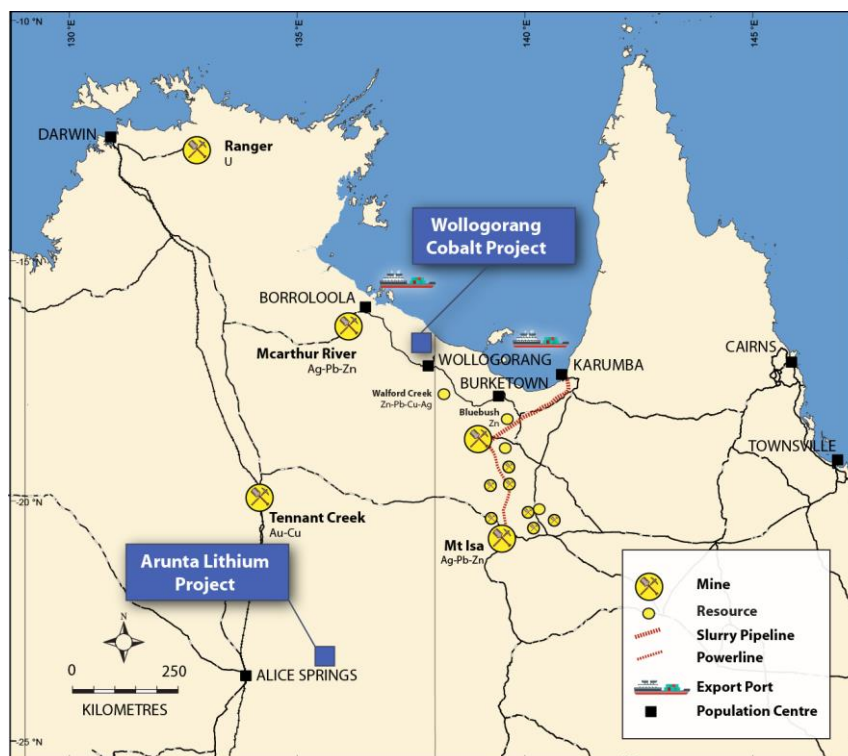
Performance Shares

Class A 9.6 M
Class B 3.6 M

Last Capital Raise
24 April 2018 - SPP
\$0.6M @ 35c

BOARD

Len Dean - Chair
Michael Schwarz - MD
Duncan Chessell - Exec Dir
Andrew Shearer - NED
Jarek Kopias - Co Sec



Project Location

The Wologorang Cobalt Project is located in the far north-eastern corner of the Northern Territory, a mining friendly authority. The Project area is 180 km to the south-east of the population centre of Borroloola. The capital city of Darwin is 870 km to the north-west and the McArthur River Mine is approximately 150 km to the west-northwest.

Rule 2.7, 3.10.3, 3.10.4, 3.10.5

Appendix 3B

New issue announcement, application for quotation of additional securities and agreement

Information or documents not available now must be given to ASX as soon as available. Information and documents given to ASX become ASX's property and may be made public.

Introduced 01/07/96 Origin: Appendix 5 Amended 01/07/98, 01/09/99, 01/07/00, 30/09/01, 11/03/02, 01/01/03, 24/10/05, 01/08/12, 04/03/13

Name of entity

Northern Cobalt Limited

ABN

99 617 789 732

We (the entity) give ASX the following information.

Part 1 - All issues

You must complete the relevant sections (attach sheets if there is not enough space).

- | | | |
|---|---|-----------------------------------|
| 1 | +Class of +securities issued or to be issued | Ordinary Shares |
| 2 | Number of +securities issued or to be issued (if known) or maximum number which may be issued | 5,000 |
| 3 | Principal terms of the +securities (e.g. if options, exercise price and expiry date; if partly paid +securities, the amount outstanding and due dates for payment; if +convertible securities, the conversion price and dates for conversion) | Fully paid ordinary shares (N27). |

+ See chapter 19 for defined terms.

Appendix 3B
New issue announcement

4	Do the +securities rank equally in all respects from the +issue date with an existing +class of quoted +securities?	Yes
	<p>If the additional +securities do not rank equally, please state:</p> <ul style="list-style-type: none"> • the date from which they do • the extent to which they participate for the next dividend, (in the case of a trust, distribution) or interest payment • the extent to which they do not rank equally, other than in relation to the next dividend, distribution or interest payment 	
5	Issue price or consideration	20 cents per share
6	Purpose of the issue (If issued as consideration for the acquisition of assets, clearly identify those assets)	Exercise of quoted options (N27O).
6a	<p>Is the entity an +eligible entity that has obtained security holder approval under rule 7.1A?</p> <p>If Yes, complete sections 6b – 6h in relation to the +securities the subject of this Appendix 3B, and comply with section 6i</p>	Yes
6b	The date the security holder resolution under rule 7.1A was passed	24 November 2017
6c	Number of +securities issued without security holder approval under rule 7.1	None

+ See chapter 19 for defined terms.

6d	Number of +securities issued with security holder approval under rule 7.1A	None						
6e	Number of +securities issued with security holder approval under rule 7.3, or another specific security holder approval (specify date of meeting)	None						
6f	Number of +securities issued under an exception in rule 7.2	5,000 – exception 4						
6g	If +securities issued under rule 7.1A, was issue price at least 75% of 15 day VWAP as calculated under rule 7.1A.3? Include the +issue date and both values. Include the source of the VWAP calculation.	Not applicable						
6h	If +securities were issued under rule 7.1A for non-cash consideration, state date on which valuation of consideration was released to ASX Market Announcements	Not applicable						
6i	Calculate the entity’s remaining issue capacity under rule 7.1 and rule 7.1A – complete Annexure 1 and release to ASX Market Announcements	7.1 – 1,013,319 7.1A – 229,189						
7	+Issue dates Note: The issue date may be prescribed by ASX (refer to the definition of issue date in rule 19.12). For example, the issue date for a pro rata entitlement issue must comply with the applicable timetable in Appendix 7A. Cross reference: item 33 of Appendix 3B.	29 June 2018						
8	Number and +class of all +securities quoted on ASX (including the +securities in section 2 if applicable)	<table><tr><th>Number</th><th>+Class</th></tr><tr><td>42,303,406</td><td>Fully paid ordinary shares (N27)</td></tr><tr><td>6,323,337</td><td>Quoted options. Exercise price \$0.20. Expiry 14 September 2019 (N27O)</td></tr></table>	Number	+Class	42,303,406	Fully paid ordinary shares (N27)	6,323,337	Quoted options. Exercise price \$0.20. Expiry 14 September 2019 (N27O)
Number	+Class							
42,303,406	Fully paid ordinary shares (N27)							
6,323,337	Quoted options. Exercise price \$0.20. Expiry 14 September 2019 (N27O)							

+ See chapter 19 for defined terms.

Appendix 3B
New issue announcement

9	Number and +class of all +securities not quoted on ASX (including the +securities in section 2 if applicable)	<table><tr><th>Number</th><th>+Class</th></tr><tr><td>8,510,000</td><td>Fully paid ordinary shares escrowed to 22 September 2019</td></tr><tr><td colspan="2">Unlisted options</td></tr><tr><td>6,450,000</td><td>Exercise price \$0.25. Expiry 21 March 2021. 6,000,000 escrowed to 22 September 2019.</td></tr><tr><td>5,800,000</td><td>Exercise price \$0.25. Expiry 6 September 2021 escrowed to 22 September 2019.</td></tr><tr><td>12,250,000</td><td>Total unlisted options</td></tr><tr><td>Performance Shares</td><td>Each performance share converts into one ordinary share upon meeting the performance milestone. All escrowed to 22 September 2019.</td></tr><tr><td>9,600,000</td><td>Class A Performance Shares</td></tr><tr><td>3,575,000</td><td>Class B Performance Shares</td></tr><tr><td>13,175,000</td><td>Total Performance Shares</td></tr></table>	Number	+Class	8,510,000	Fully paid ordinary shares escrowed to 22 September 2019	Unlisted options		6,450,000	Exercise price \$0.25. Expiry 21 March 2021. 6,000,000 escrowed to 22 September 2019.	5,800,000	Exercise price \$0.25. Expiry 6 September 2021 escrowed to 22 September 2019.	12,250,000	Total unlisted options	Performance Shares	Each performance share converts into one ordinary share upon meeting the performance milestone. All escrowed to 22 September 2019.	9,600,000	Class A Performance Shares	3,575,000	Class B Performance Shares	13,175,000	Total Performance Shares
Number	+Class																					
8,510,000	Fully paid ordinary shares escrowed to 22 September 2019																					
Unlisted options																						
6,450,000	Exercise price \$0.25. Expiry 21 March 2021. 6,000,000 escrowed to 22 September 2019.																					
5,800,000	Exercise price \$0.25. Expiry 6 September 2021 escrowed to 22 September 2019.																					
12,250,000	Total unlisted options																					
Performance Shares	Each performance share converts into one ordinary share upon meeting the performance milestone. All escrowed to 22 September 2019.																					
9,600,000	Class A Performance Shares																					
3,575,000	Class B Performance Shares																					
13,175,000	Total Performance Shares																					
10	Dividend policy (in the case of a trust, distribution policy) on the increased capital (interests)	Dividends are paid as authorised by directors.																				

+ See chapter 19 for defined terms.

Part 2 - Pro rata issue

- | | | |
|----|--|----------------|
| 11 | Is security holder approval required? | Not applicable |
| 12 | Is the issue renounceable or non-renounceable? | |
| 13 | Ratio in which the ⁺ securities will be offered | |
| 14 | ⁺ Class of ⁺ securities to which the offer relates | |
| 15 | ⁺ Record date to determine entitlements | |
| 16 | Will holdings on different registers (or subregisters) be aggregated for calculating entitlements? | |
| 17 | Policy for deciding entitlements in relation to fractions | |
| 18 | Names of countries in which the entity has security holders who will not be sent new offer documents

<small>Note: Security holders must be told how their entitlements are to be dealt with.
Cross reference: rule 7.7.</small> | |
| 19 | Closing date for receipt of acceptances or renunciations | |

⁺ See chapter 19 for defined terms.

Appendix 3B
New issue announcement

20	Names of any underwriters	
21	Amount of any underwriting fee or commission	
22	Names of any brokers to the issue	
23	Fee or commission payable to the broker to the issue	
24	Amount of any handling fee payable to brokers who lodge acceptances or renunciations on behalf of security holders	
25	If the issue is contingent on security holders' approval, the date of the meeting	
26	Date entitlement and acceptance form and offer documents will be sent to persons entitled	
27	If the entity has issued options, and the terms entitle option holders to participate on exercise, the date on which notices will be sent to option holders	
28	Date rights trading will begin (if applicable)	
29	Date rights trading will end (if applicable)	
30	How do security holders sell their entitlements <i>in full</i> through a broker?	
31	How do security holders sell <i>part</i> of their entitlements through a broker and accept for the balance?	

+ See chapter 19 for defined terms.

- 32 How do security holders dispose of their entitlements (except by sale through a broker)?
- 33 ⁺Issue date

Part 3 - Quotation of securities

You need only complete this section if you are applying for quotation of securities

- 34 Type of ⁺securities
(tick one)
- (a) ☒ ⁺Securities described in Part 1
- (b) ☐ All other ⁺securities
Example: restricted securities at the end of the escrowed period, partly paid securities that become fully paid, employee incentive share securities when restriction ends, securities issued on expiry or conversion of convertible securities

Entities that have ticked box 34(a)

Additional securities forming a new class of securities

Tick to indicate you are providing the information or documents

- 35 ☐ If the ⁺securities are ⁺equity securities, the names of the 20 largest holders of the additional ⁺securities, and the number and percentage of additional ⁺securities held by those holders
- 36 ☐ If the ⁺securities are ⁺equity securities, a distribution schedule of the additional ⁺securities setting out the number of holders in the categories
1 - 1,000
1,001 - 5,000
5,001 - 10,000
10,001 - 100,000
100,001 and over
- 37 ☐ A copy of any trust deed for the additional ⁺securities

⁺ See chapter 19 for defined terms.

Entities that have ticked box 34(b)

38	Number of +securities for which +quotation is sought					
39	+Class of +securities for which quotation is sought					
40	<p>Do the +securities rank equally in all respects from the +issue date with an existing +class of quoted +securities?</p> <p>If the additional +securities do not rank equally, please state:</p> <ul style="list-style-type: none">• the date from which they do• the extent to which they participate for the next dividend, (in the case of a trust, distribution) or interest payment• the extent to which they do not rank equally, other than in relation to the next dividend, distribution or interest payment					
41	<p>Reason for request for quotation now</p> <p>Example: In the case of restricted securities, end of restriction period</p> <p>(if issued upon conversion of another +security, clearly identify that other +security)</p>					
42	Number and +class of all +securities quoted on ASX (including the +securities in clause 38)	<table border="1" style="width: 100%; border-collapse: collapse;"><thead><tr><th style="width: 50%; padding: 5px;">Number</th><th style="width: 50%; padding: 5px;">+Class</th></tr></thead><tbody><tr><td style="height: 100px;"></td><td style="height: 100px;"></td></tr></tbody></table>	Number	+Class		
Number	+Class					

+ See chapter 19 for defined terms.

Quotation agreement

1 +Quotation of our additional +securities is in ASX's absolute discretion. ASX may quote the +securities on any conditions it decides.

2 We warrant the following to ASX.

- The issue of the +securities to be quoted complies with the law and is not for an illegal purpose.
- There is no reason why those +securities should not be granted +quotation.
- An offer of the +securities for sale within 12 months after their issue will not require disclosure under section 707(3) or section 1012C(6) of the Corporations Act.
Note: An entity may need to obtain appropriate warranties from subscribers for the securities in order to be able to give this warranty
- Section 724 or section 1016E of the Corporations Act does not apply to any applications received by us in relation to any +securities to be quoted and that no-one has any right to return any +securities to be quoted under sections 737, 738 or 1016F of the Corporations Act at the time that we request that the +securities be quoted.
- If we are a trust, we warrant that no person has the right to return the +securities to be quoted under section 1019B of the Corporations Act at the time that we request that the +securities be quoted.

3 We will indemnify ASX to the fullest extent permitted by law in respect of any claim, action or expense arising from or connected with any breach of the warranties in this agreement.

4 We give ASX the information and documents required by this form. If any information or document is not available now, we will give it to ASX before +quotation of the +securities begins. We acknowledge that ASX is relying on the information and documents. We warrant that they are (will be) true and complete.

Sign here:


.....
Company secretary

Date: 29 June 2018

Print name: Jaroslaw (Jarek) Kopias

== == == == ==

+ See chapter 19 for defined terms.

Appendix 3B – Annexure 1

Calculation of placement capacity under rule 7.1 and rule 7.1A for eligible entities

Introduced 01/08/12 Amended 04/03/13

Part 1

Rule 7.1 – Issues exceeding 15% of capital	
Step 1: Calculate “A”, the base figure from which the placement capacity is calculated	
Insert number of fully paid +ordinary securities on issue 12 months before the +issue date or date of agreement to issue	35,577,500
Add the following: <ul style="list-style-type: none"> Number of fully paid +ordinary securities issued in that 12 month period under an exception in rule 7.2 Number of fully paid +ordinary securities issued in that 12 month period with shareholder approval Number of partly paid +ordinary securities that became fully paid in that 12 month period <p><i>Note:</i></p> <ul style="list-style-type: none"> Include only ordinary securities here – other classes of equity securities cannot be added Include here (if applicable) the securities the subject of the Appendix 3B to which this form is annexed It may be useful to set out issues of securities on different dates as separate line items 	4,210,413 ordinary shares issued between 10 November 2017 and 29 June 2018, under listing rule 7.2, exception 4. 192,500 issued on 6 October 2017 and approved by shareholders on 24 November 2017. 1,664,319 ordinary shares issued on 24 April 2018, under listing rule 7.2, exception 15.
Subtract the number of fully paid +ordinary securities cancelled during that 12 month period	0
“A”	41,644,732

+ See chapter 19 for defined terms.

Step 2: Calculate 15% of “A”	
“B”	0.15 <i>[Note: this value cannot be changed]</i>
Multiply “A” by 0.15	6,246,709
Step 3: Calculate “C”, the amount of placement capacity under rule 7.1 that has already been used	
<p>Insert number of ⁺equity securities issued or agreed to be issued in that 12 month period <i>not counting</i> those issued:</p> <ul style="list-style-type: none"> • Under an exception in rule 7.2 • Under rule 7.1A • With security holder approval under rule 7.1 or rule 7.4 <p><i>Note:</i></p> <ul style="list-style-type: none"> • <i>This applies to equity securities, unless specifically excluded – not just ordinary securities</i> • <i>Include here (if applicable) the securities the subject of the Appendix 3B to which this form is annexed</i> • <i>It may be useful to set out issues of securities on different dates as separate line items</i> 	<p>600,000 shares issued on 8 February 2018.</p> <p>4,633,390 shares issued on 21 March 2018 under a share placement.</p>
“C”	5,233,390
Step 4: Subtract “C” from [“A” x “B”] to calculate remaining placement capacity under rule 7.1	
<p>“A” x 0.15</p> <p><i>Note: number must be same as shown in Step 2</i></p>	6,246,709
<p>Subtract “C”</p> <p><i>Note: number must be same as shown in Step 3</i></p>	5,233,390
Total [“A” x 0.15] – “C”	<p>1,013,319</p> <p><i>[Note: this is the remaining placement capacity under rule 7.1]</i></p>

+ See chapter 19 for defined terms.

Part 2

Rule 7.1A – Additional placement capacity for eligible entities	
Step 1: Calculate “A”, the base figure from which the placement capacity is calculated	
“A” <i>Note: number must be same as shown in Step 1 of Part 1</i>	41,644,732
Step 2: Calculate 10% of “A”	
“D”	0.10 <i>Note: this value cannot be changed</i>
Multiply “A” by 0.10	4,164,473
Step 3: Calculate “E”, the amount of placement capacity under rule 7.1A that has already been used	
Insert number of +equity securities issued or agreed to be issued in that 12 month period under rule 7.1A Notes: <ul style="list-style-type: none"> • This applies to equity securities – not just ordinary securities • Include here – if applicable – the securities the subject of the Appendix 3B to which this form is annexed • Do not include equity securities issued under rule 7.1 (they must be dealt with in Part 1), or for which specific security holder approval has been obtained • It may be useful to set out issues of securities on different dates as separate line items 	3,935,284 shares issued on 21 March 2018 under a share placement.
“E”	3,935,284

+ See chapter 19 for defined terms.

Step 4: Subtract “E” from [“A” x “D”] to calculate remaining placement capacity under rule 7.1A	
“A” x 0.10 <i>Note: number must be same as shown in Step 2</i>	4,164,473
Subtract “E” <i>Note: number must be same as shown in Step 3</i>	3,935,284
Total [“A” x 0.10] – “E”	229,189 <i>Note: this is the remaining placement capacity under rule 7.1A</i>

+ See chapter 19 for defined terms.