



METEORIC RESOURCES

ASX:MEI

**COBALT
COBALT
COBALT!**





Disclaimer

The material in this presentation has been prepared by Meteoric Resources and is general background information about Meteoric's activities current as at the date of this presentation. This information is given in summary form and does not purport to be complete. Information in this presentation, including forecast financial information, should not be considered as advice or a recommendation to investors or potential investors in relation to holding, purchasing or selling securities or other financial products or instruments and does not take into account your particular investment objectives, financial situation or needs.

Before acting on any information you should consider the appropriateness of the information having regard to these matters, any relevant offer document and in particular, you should seek independent financial advice. All securities and financial product or instrument transactions involve risks, which include (among others) the risk of adverse or unanticipated market, financial or political developments and, in international transactions, currency risk.

This presentation may contain forward looking statements including statements regarding our intent, belief or current expectations with respect to Meteoric's businesses and operations, market conditions, results of operation and financial condition, capital adequacy, specific provisions and risk management practices. Readers are cautioned not to place undue reliance on these forward looking statements. Meteoric does not undertake any obligation to publicly release the result of any revisions to these forward looking statements to reflect events or circumstances after the date hereof to reflect the occurrence of unanticipated events. While due care has been used in the preparation of forecast information, actual results may vary in a materially positive or negative manner. Forecasts and hypothetical examples are subject to uncertainty and contingencies outside Meteoric's control. Past performance is not a reliable indication of future performance.

Competent Person Statement

The information in this announcement that relates to exploration results is based on information compiled and fairly represented by Mr Tony Cormack, who is a Member of the Australian Institute of Geoscientists and a consultant to Meteoric Resources Limited. Mr Cormack, has sufficient experience relevant to the style of mineralisation and type of deposit under consideration, and to the activity which he has undertaken, to qualify as a Competent Person as defined in the 2012 Edition of the Joint Ore Reserves Committee (JORC) Australasian Code for Reporting of Exploration Results, Mineral Resources and Ore Reserves. Mr King consents to the inclusion in this report of the matters based on this information in the form and context in which it appears.

What is Cobalt?



METAL

- Hard
- Dense
- High Melting point
- Magnetic

Cobalt Oxide



HETROGENITE



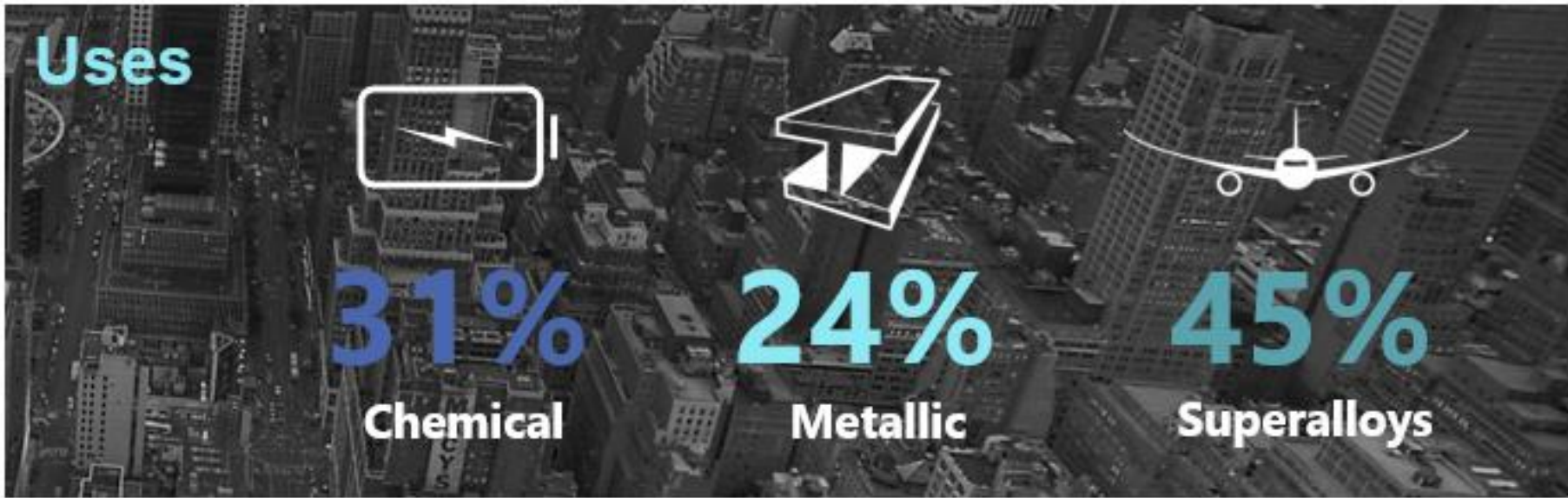
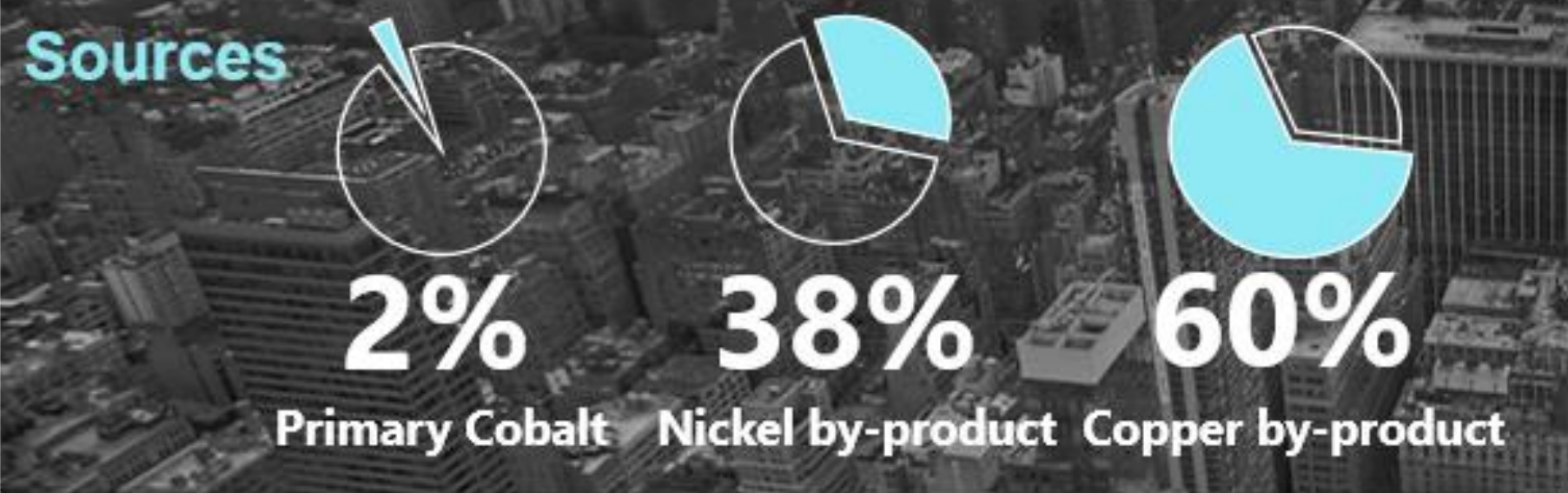
COBALTITE



ERYTHRITE



Why do we like cobalt



Why do we like cobalt



Why do we like cobalt

COBALT VALUE

Price of 1 tonne cobalt = US\$81,000

Value of 1 tonne of 1% Cobalt ore = US\$810

GOLD VALUE

Price of 1 ounce of gold = US\$ 13,000

Price of 1 gram of gold = US\$ 42.00

Value of 1 tonne open pit ore 2g/t = US\$ 84.00

Value of 1 tonne underground ore 7g/t = US\$ 294

1.0% Co is gold equivalent to approximately 20g/t of Au

Project Locations



BURT

Primary Cobalt Targets



MULLIGAN & MULLIGAN EAST

High-grade Cobalt and Silver Targets



BEAUCHAMP

Primary Cobalt and Silver Targets



LORRAIN

Primary Cobalt Silver Targets



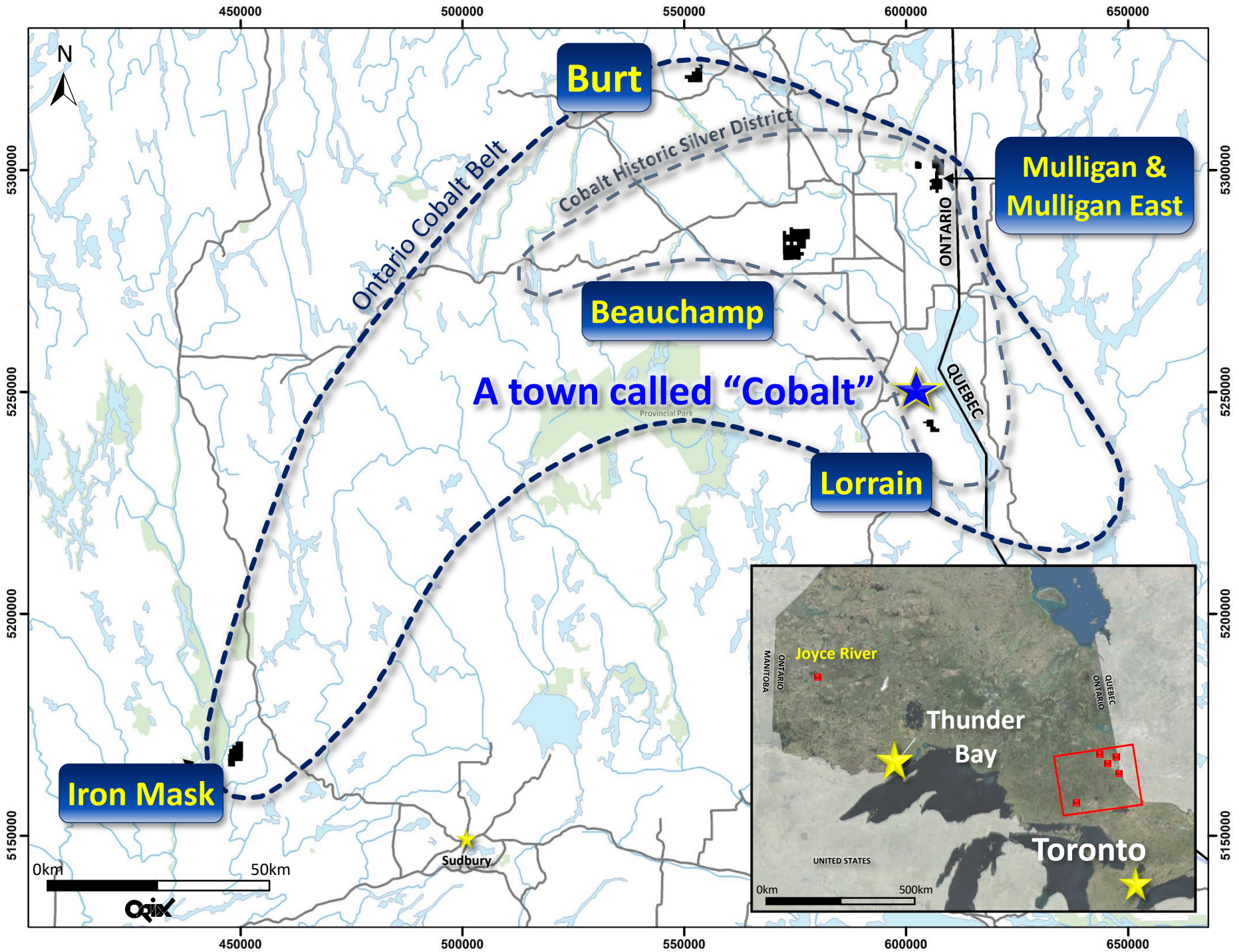
IRON MASK

Primary Cobalt Targets



JOYCE RIVER

High-grade Cu-Co-Au Target





MULLIGAN Ontario, Canada

- 8-tonne bulk sample av. grade of 10% Co
- Grab samples assay up to **12.6% Co, 39.7 g/t Ag, 1.03% Ni and 29.8 g/t Au¹**
- 8 parallel polymetallic veins

MULLIGAN EAST Ontario, Canada

- Similar trending structures that hosted historical high-grade cobalt production at Mulligan grading 10% Co

BURT Ontario, Canada

- Located near Battery Minerals' Island 27 project which intersected 4m @ 4.18% Co, 12.1 g/t Ag, 0.38% Ni and 0.098 g/t Au²

IRON MASK Ontario, Canada

- 500m from "Iron Mask Shaft" (**historical production: av. 15% Co, 255g/t Ag¹**)

BEAUCHAMP Ontario, Canada

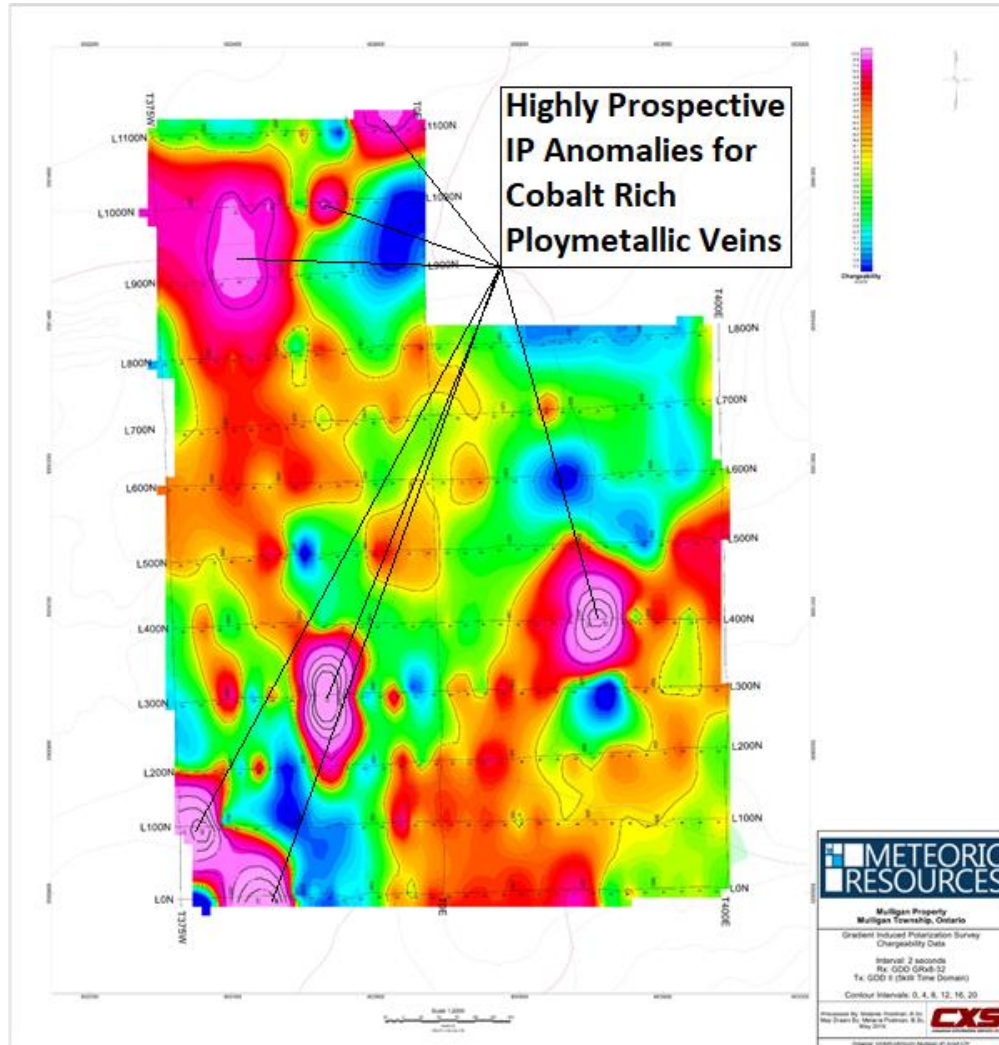
- Located 40km north of famous Cobalt Camp
- Comprises 33.5k² highly prospective for primary cobalt mineralisation

LORRAIN Ontario, Canada

- Located 9km SSE of Cobalt
- Contains numerous historical Co-Ag mine shafts and open pit workings

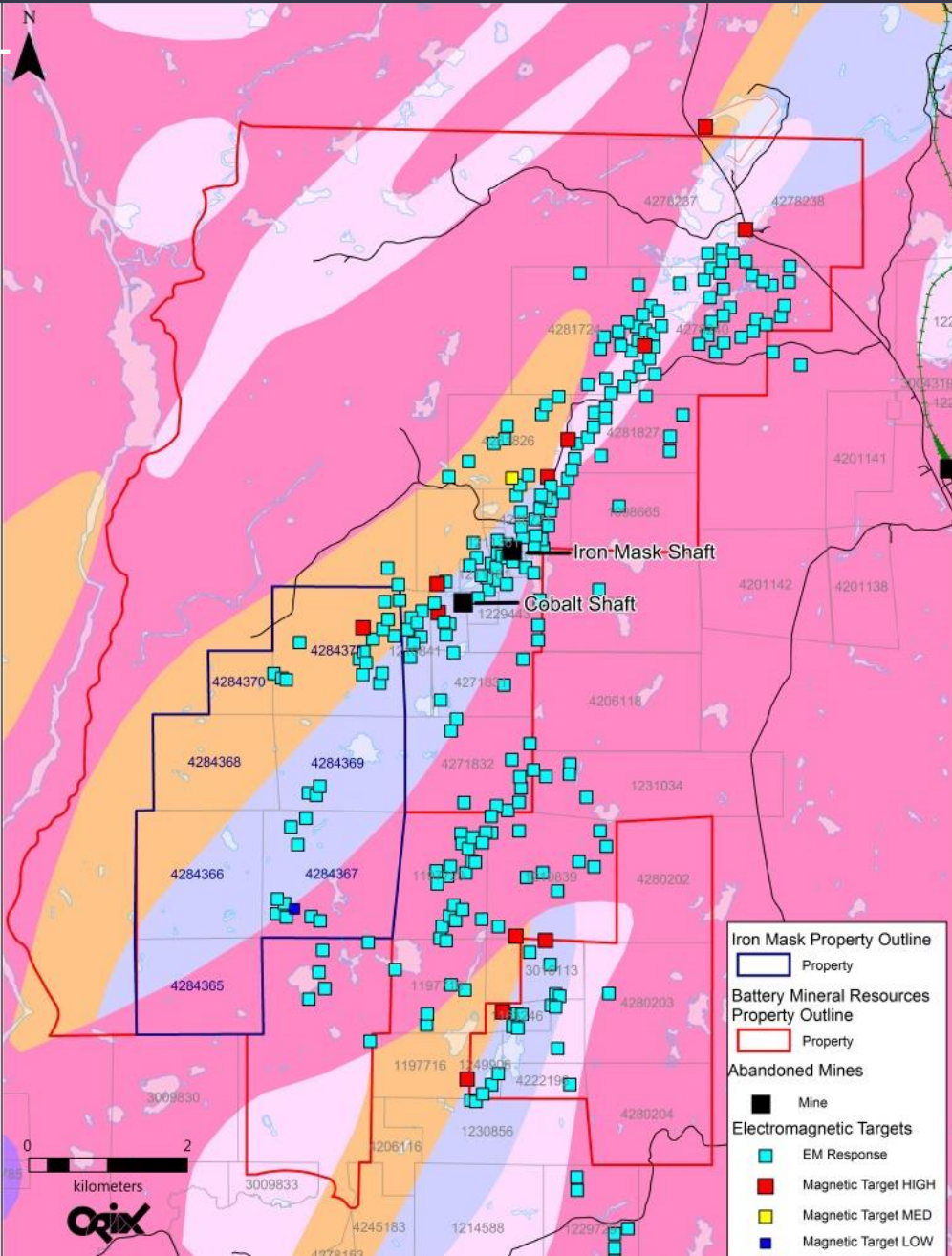
JOYCE RIVER West Ontario, Canada

- Targeting significant high-grade Co-Cu-Au mineralisation
- Rock chip assay values grading up to **0.3% Co, 11% Cu and 8.1g/t Au³**

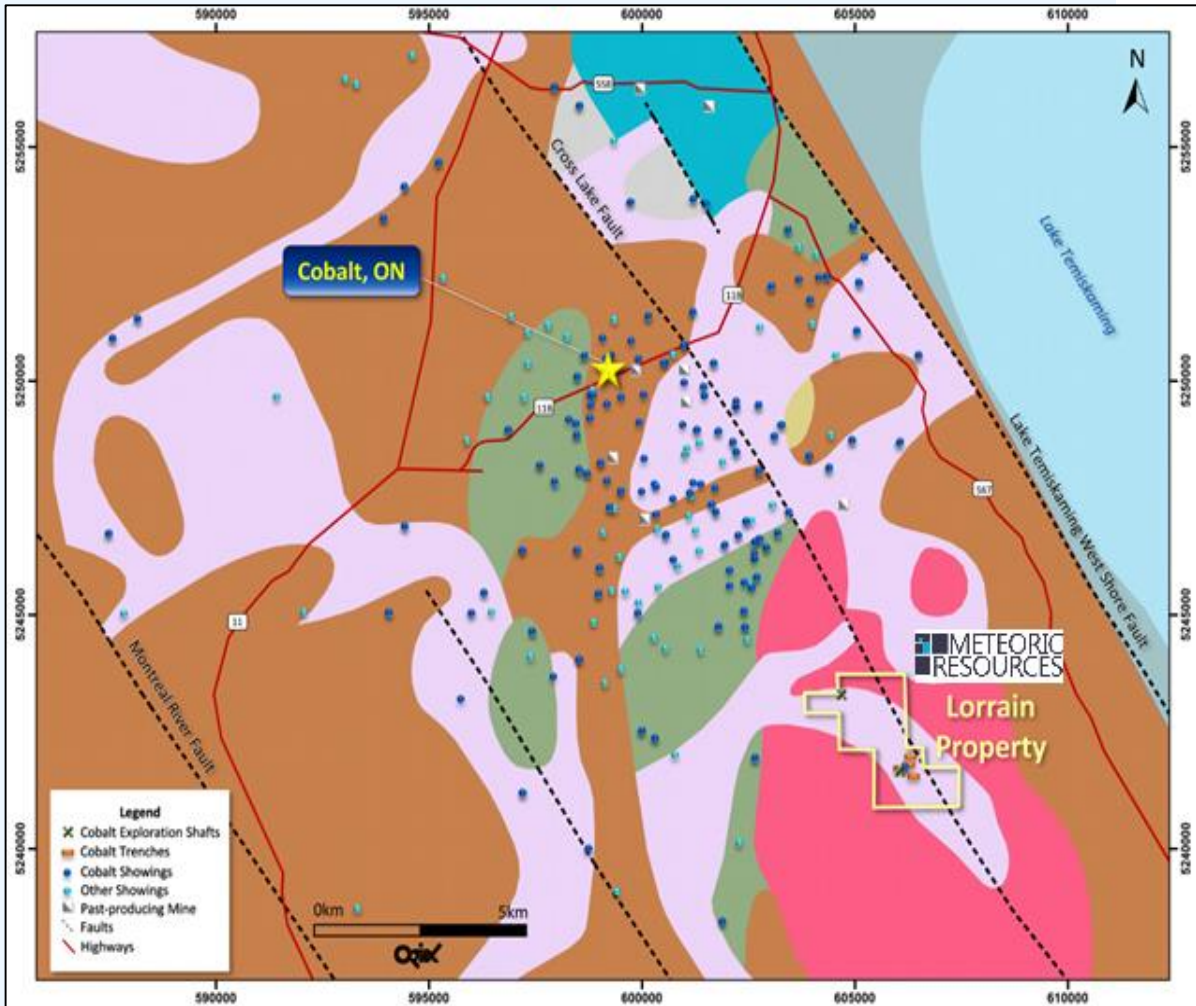


- 50km North of prolific Ag-Co mining camp of Cobalt
- Historic production averaging 10% Co
- Ground based geophysics complete – Anomalies present -Processing and 3D interpretation commenced
- Grab samples assays grading up to 9.71% Co, 16.5 g/t Ag, 14.3 g/t Au
- Sulphides visible in 200m x 200m Diabase outcrop from which historical production occurred
- The Project captures 8 parallel cobalt-rich polymetallic veins
- **Maiden drilling to commence July 2018**

Iron Mask

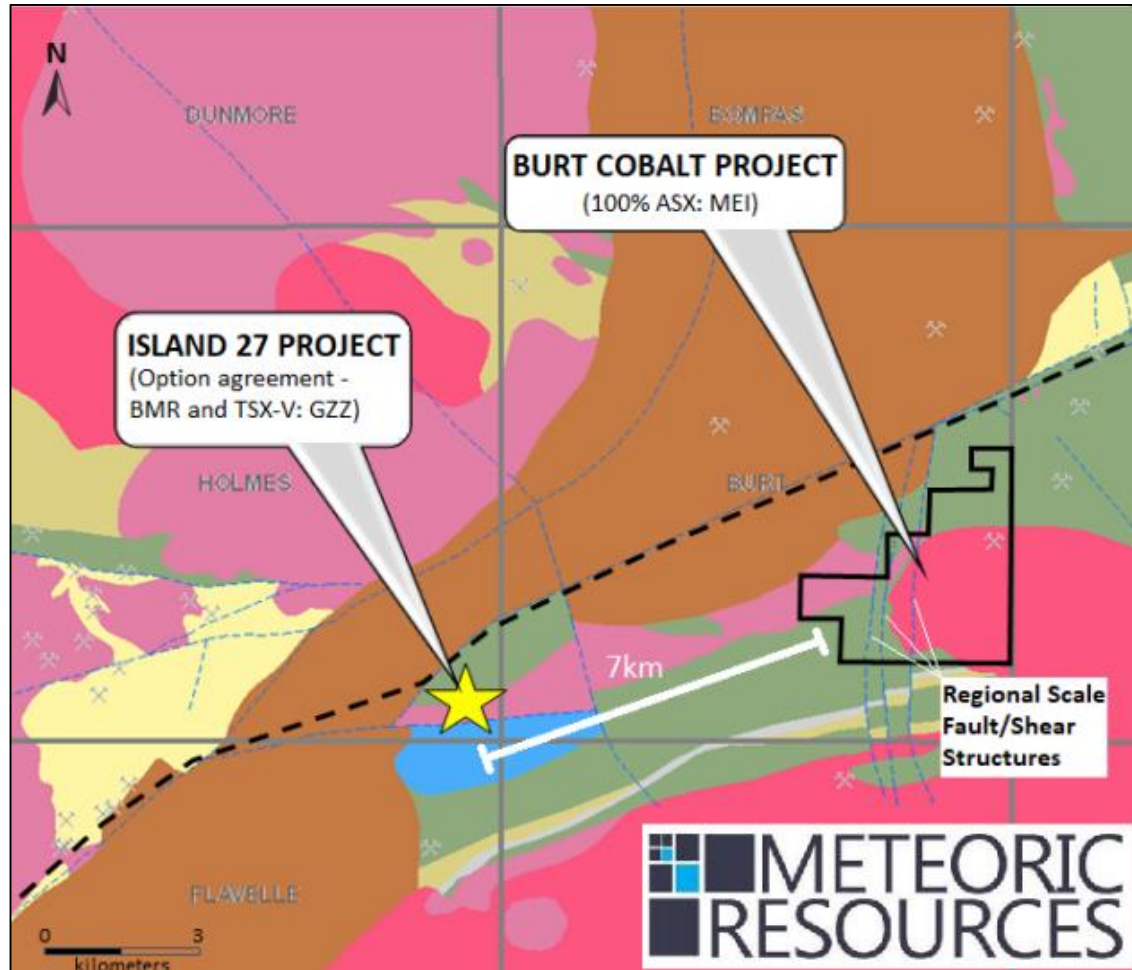


- 8 claims covering 1,408 hectares
- Sudbury Basin historical production exceeding US\$120 billion of nickel, copper and PGM metal
- Historical Iron Mask and Cobalt Shafts +Cobra showing 500m to NW:
 - Cobra Showing
 - Chip sampling grades 11.3% Co
 - Grab sampling 21.3% Co & 6.19% Ni
 - Cobalt Shaft
 - Bulk sample av. 15% Co and 279 g/t Ag
 - Grab sampling grades of up to 16% Co, 4.8% Ni and 17% Bi
 - Iron Mask Shaft
 - Channel sample 3.2% Co and 6 g/t Au
- EM and magnetic surveys confirm extension of mineralised zones into MEI claims
- Several geophysical targets identified from historic data compilation



- 4.9km² of highly prospective ground located 9km from Cobalt and within the heart of the famous Cobalt Camp
- Numerous historical Co-Ag mine shafts and open pit workings with abundant visual Co mineralisation confirmed within the Project
- Regional scale Cross-Lake Fault that controls Co-Ag mineralisation in the Cobalt Camp tracks through the Project
- Detailed mapping / approvals for ground geophysics / drilling has commenced





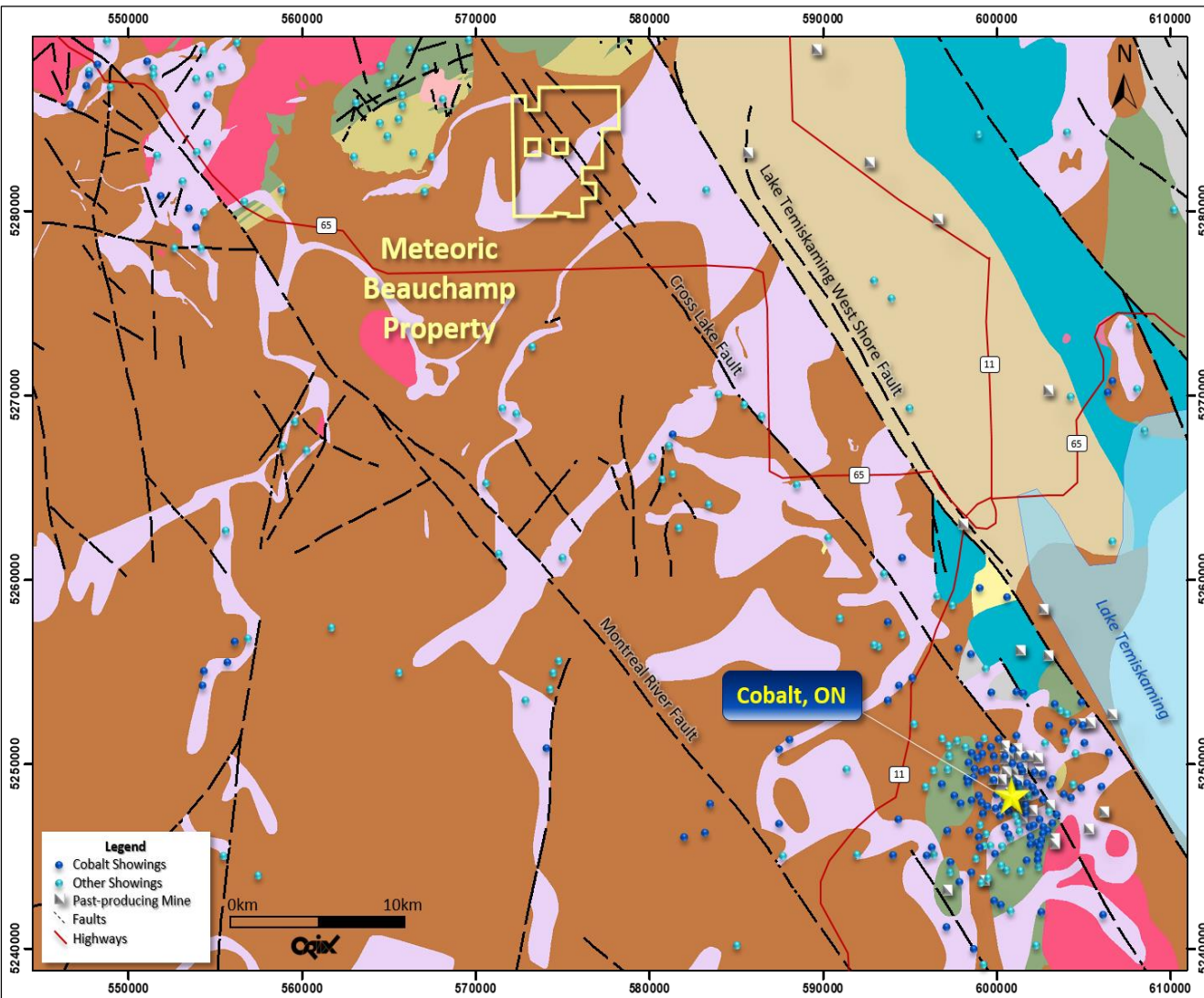
Burt

Ontario

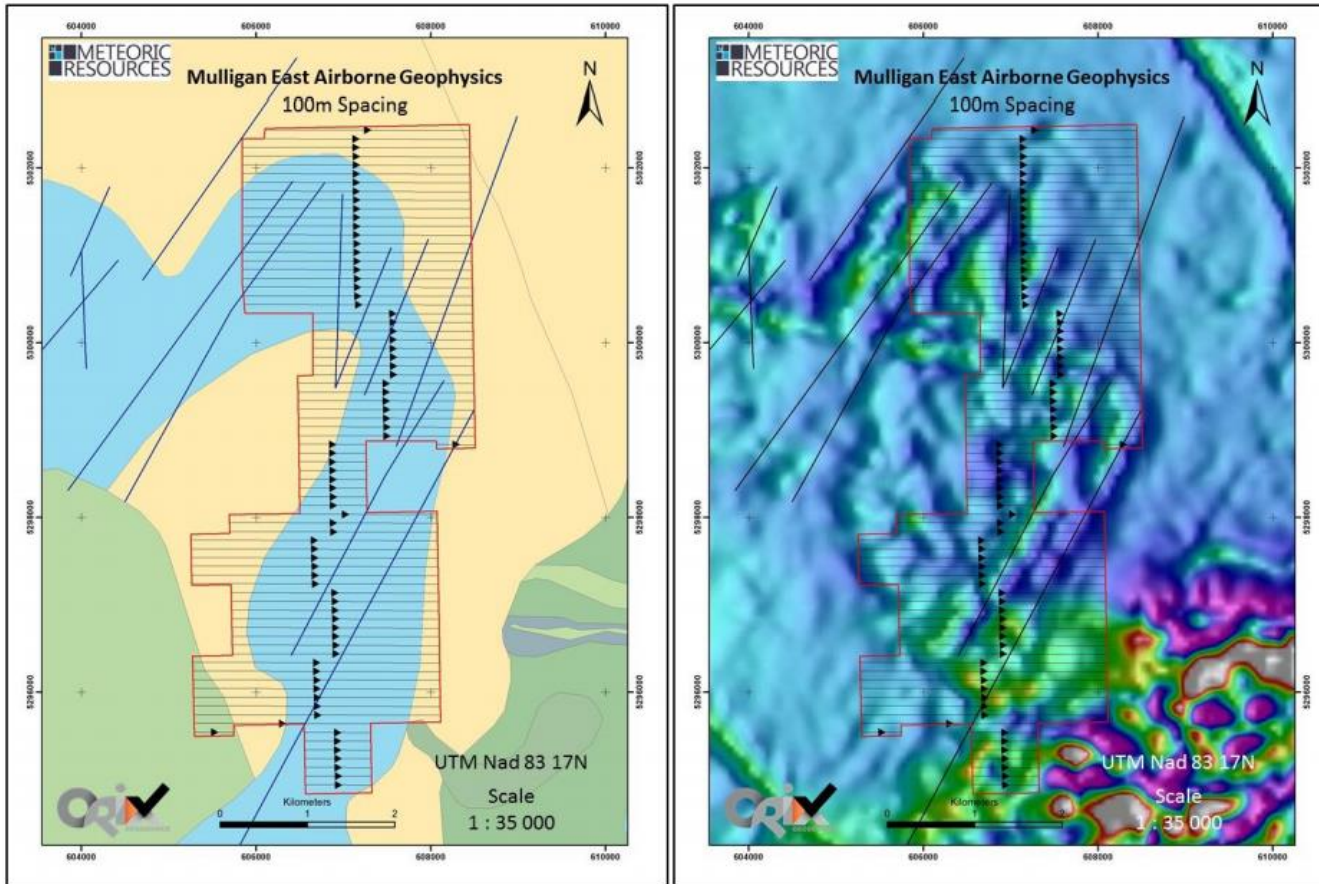
- 9.34 km² of highly prospective primary cobalt ground
- Located 7 km's directly along strike from Battery Minerals Resources' Island 27 project
- Three major fault/shear zones confirmed over 5.7km of strike length potential for high-grade primary cobalt mineralisation
- Island 27 intercepted 4m 4.18% Co, 12.1 g/t Ag, 0.38% Ni and 0.098 g/t Au



Beauchamp



- 33.5k² highly prospective for primary cobalt mineralization located 40km NNW of famous Cobalt Camp
- Contains Nipissing Diabase – host rock type for Co-Ag mineralisation
- Regional Cross-Lake Fault that controls Co-Ag mineralisation in the Cobalt Camp tracks directly through Beauchamp (and Lorrain)
- Exploration to commence immediately targeting Cross-Lake Fault



- An additional 90 claims covering 13.7km²
- Similar trending structures that hosted historical high-grade cobalt production at Mulligan grading 10% Co
- Nearby historical assays grading 4.5% Co and 87 g/t Ag within mineralisation at Foster Marshall
- Aeromagnetic data show several major NE structures in the east of the region

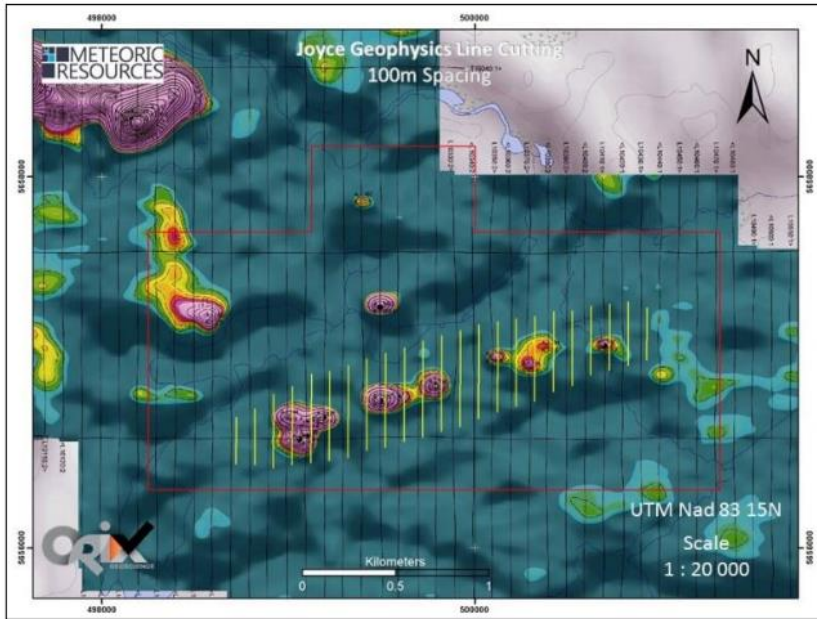


Figure 15: Joyce River Cobalt Project 100m line spaced ground-based IP/Magnetics/Resistivity geophysics program

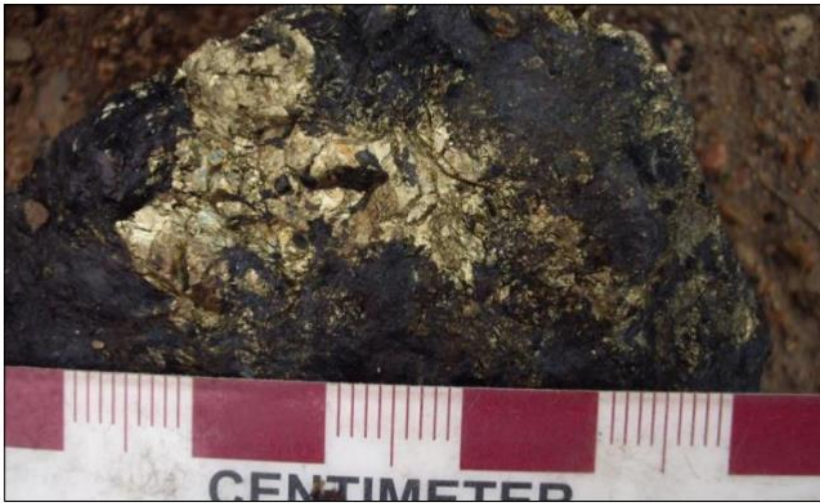


Figure 16: Massive sulphide mineralisation at the Joyce Cobalt Project, Western Ontario

- Outcropping sulphide mineralisation is a new geological style for Meteoric's cobalt portfolio
- Targeting significant tonnage Co-Cu-Au mineralisation
- Detailed EM/Magnetic geophysical data with significant co-incident anomalies
- Rock chip assay values grading up to 0.3% Co, 11% Cu and 8.1 g/t Au



SAMPLING



GEOPHYSICS



DRILLING



Why Meteoric Resources?



A CLEAR PATH TO DISCOVERY

HUGE GLOBAL DEMAND FOR PRODUCT

ADVANCED COBALT STRATEGY

QUALITYPROVEN MANAGEMENT TEAM

APPEALING VALUATION

TIMING



METEORIC RESOURCES

For more information please do not hesitate to contact us at any time



Address

Ground Floor, Unit 5, 1 Centro Avenue
Subiaco, WA 6008



Contact Info

Email: ajtunks@meteoric.com.au
Website: www.meteoric.com.au



Telephone

Tel: 08 9486 4036

