



**Anglo Australian Resources NL**

**CORPORATE PRESENTATION – MAY 2018**

ACN 009 159 007

# DISCLAIMER

---

This document has been prepared by Anglo Australian Resources NL (“Anglo Australian” or the “Company”). No party other than Anglo Australian has authorised or caused the issue of this document, or takes responsibility for, or makes any statements, representations or undertakings in this document. Exploration and resource information was previously released to the ASX on 13/06/13, 30/07/14, 04/04/16, 31/01/17, 21/03/18, 23/04/18 & 14/05/18.

**Presentation of general background:** This document contains general background information about Anglo Australian’s activities current as at the date of this presentation. It is information in a summary form only and does not contain all the information necessary to fully evaluate any transaction or investment. It should be read in conjunction with Anglo Australian’s other periodic and continuous disclosure announcements to the ASX at [www.asx.com.au](http://www.asx.com.au).

**Not a prospectus:** This document is not a prospectus or a product disclosure statement under the Corporations Act 2001 (Cth) and has not been lodged with Australian Securities and Investment Commission (ASIC).

**Not investment advice:** The information provided in this presentation is not intended to be relied upon as advice to investors or potential investors and has been prepared without taking into account the recipient’s investment objectives, financial circumstances or particular needs. Any investment decision should be made based solely upon appropriate due diligence. Recipients of this presentation are advised to consult their own professional advisers. An investment in any listed company, including Anglo Australian, is subject to significant risks of loss of income and capital. Cooling-off rights do not apply to an investment in any new shares. The recipient cannot, in most circumstances, withdraw an application once it has been completed.

**Financial data:** All dollar values are in Australian dollars (A\$) unless otherwise stated.

**Disclaimer:** Each of Anglo Australian and respective directors, agents, officers, employees and advisers expressly disclaim, to the maximum extent permitted by law, all liabilities (however caused, including negligence) in

respect of, make no representations regarding, and take no responsibility for, any part of this presentation and make no representation or warranty as to the currency, accuracy, reliability or completeness of any information, statements, opinions, conclusions or representations contained in this presentation. In particular, this presentation does not constitute, and shall not be relied upon as, a promise, representation, warranty or guarantee as to the past, present or the future performance of Anglo Australian.

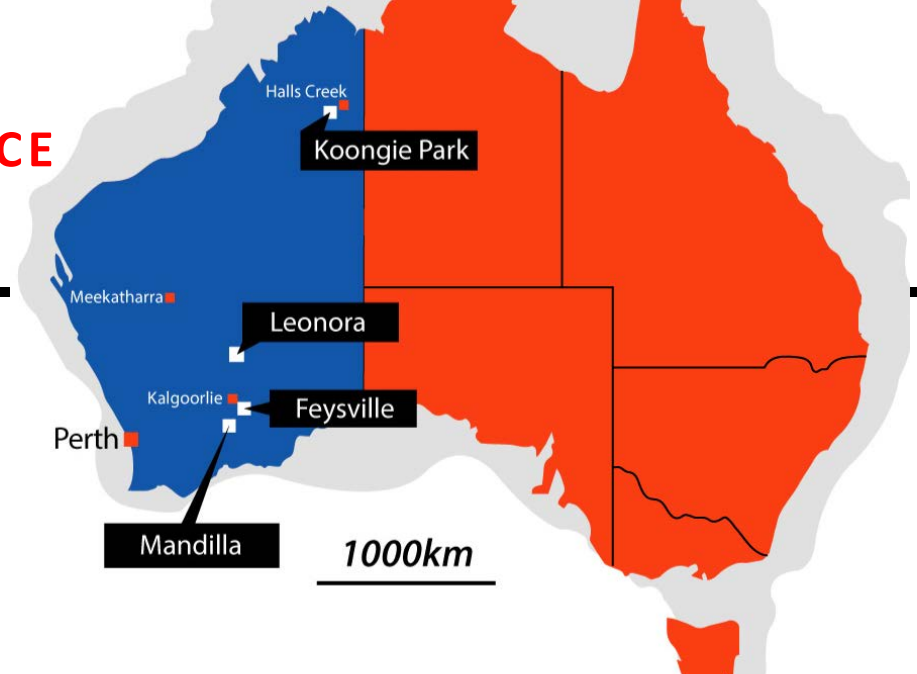
**Risks:** An investment in new shares is subject to investment and other known and unknown risks, some of which are beyond the control of Anglo Australian and its related bodies corporate and respective directors, agents, officers, employees and advisers. Anglo Australian does not guarantee any particular rate of return or the performance of Anglo Australian nor does it guarantee the repayment of capital from Anglo Australian or any particular tax treatment.

**Not an offer in other jurisdictions:** This presentation is not an offer to sell or a solicitation of an offer to subscribe or purchase or a recommendation of any securities, and may not be distributed in any jurisdiction except in accordance with the legal requirements applicable in such jurisdiction. No action has been taken or will be taken that would permit a public offering of the new shares in any jurisdiction outside Australia. Recipients of this document should inform themselves of the restrictions that apply in their own jurisdiction.



# ANGLO AUSTRALIAN AT A GLANCE

AN ASX LISTED EXPLORATION COMPANY WITH FIVE KEY RESOURCES INTERESTS IN GOLD AND BASE METALS, PRIMARILY COPPER AND ZINC, ALL IN WESTERN AUSTRALIA.



PROJECT	EXPLORATION STATUS	LOCATION	PROSPECTIVITY
Feysville Gold	Mineral Resources exist and numerous new targets identified and drilling is underway	Highly strategic, 14 kilometers south of the Super Pit	Extremely high
Koongie Park Gold	Many kilometers of under explored shear zones but mapping, soils and drilling are planned	Highly strategic	Very high
Mandilla Gold	East Mandilla Gold Resource and underexplored	Non strategic but close by the Wattle Gold Mine	Modest
Koongie Park Base Metals	Indicated Mineral Resources and underexplored	Highly strategic, with numerous VMS targets existing	Very high
Leonora Base Metals	Significantly underexplored	Strategic, along strike from the Jaguar and Bentley Mines.	Modest



# CORPORATE SNAPSHOT

## 12 MONTH SHARE PRICE AND VOLUME

### KEY METRICS

ASX Code	AAR
Shares on Issue (incl. May 2018 placement)	312.1 million
Unlisted Options	91.5 million (\$0.02 - \$0.08)
Share Price	\$0.09
Market Capitalisation (excluding options)	\$28.1 million
Board	Approx. 27% (diluted)

Period: 1 year (25 May 2017 - 25 May 2018)



# DIRECTORS AND MANAGEMENT

---



**John Jones AM**  
Executive Chairman

Former Chairman Troy Resources, North Kalgurli Mines and Jones Mining. Non-Executive Director Troy Resources. Chairman Tanga Resources. Chairman of Altan Rio Minerals Limited and Altan Nevada Limited (both TSXV). Director of Hampton Transport Services, Kalgoorlie pastoralist.



**Peter Stern**  
Non-Executive Director

Non-Executive Chairman Troy Resources. Non-Executive Director Altan Nevada Minerals (TSXV). Principal of Metropolis Corporate Advisory Services. Formerly corporate advisory executive with Macquarie Bank, UBS and Deutsche Bank. BSc. Hons, Geology. FAICD.



**Graeme Smith**  
Non-Executive Director  
& Company Secretary

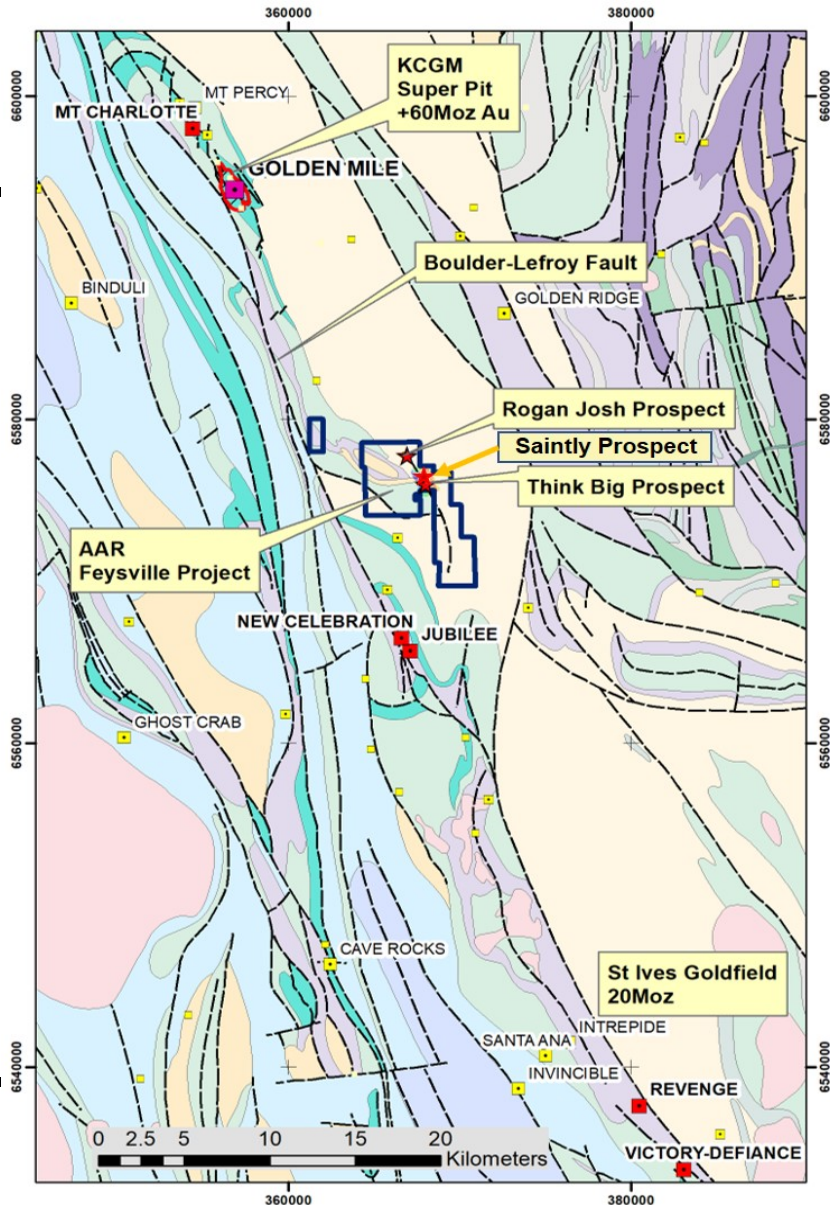
Principal of Wembley Corporate Services. Has held CFO and Company Secretary positions with Top 10 Australian and overseas mining companies. BEc, MComLaw, MBA, FCPA, FCIS, FGIA.





# FEYSVILLE GOLD PROJECT

# FEYSVILLE GOLD PROJECT

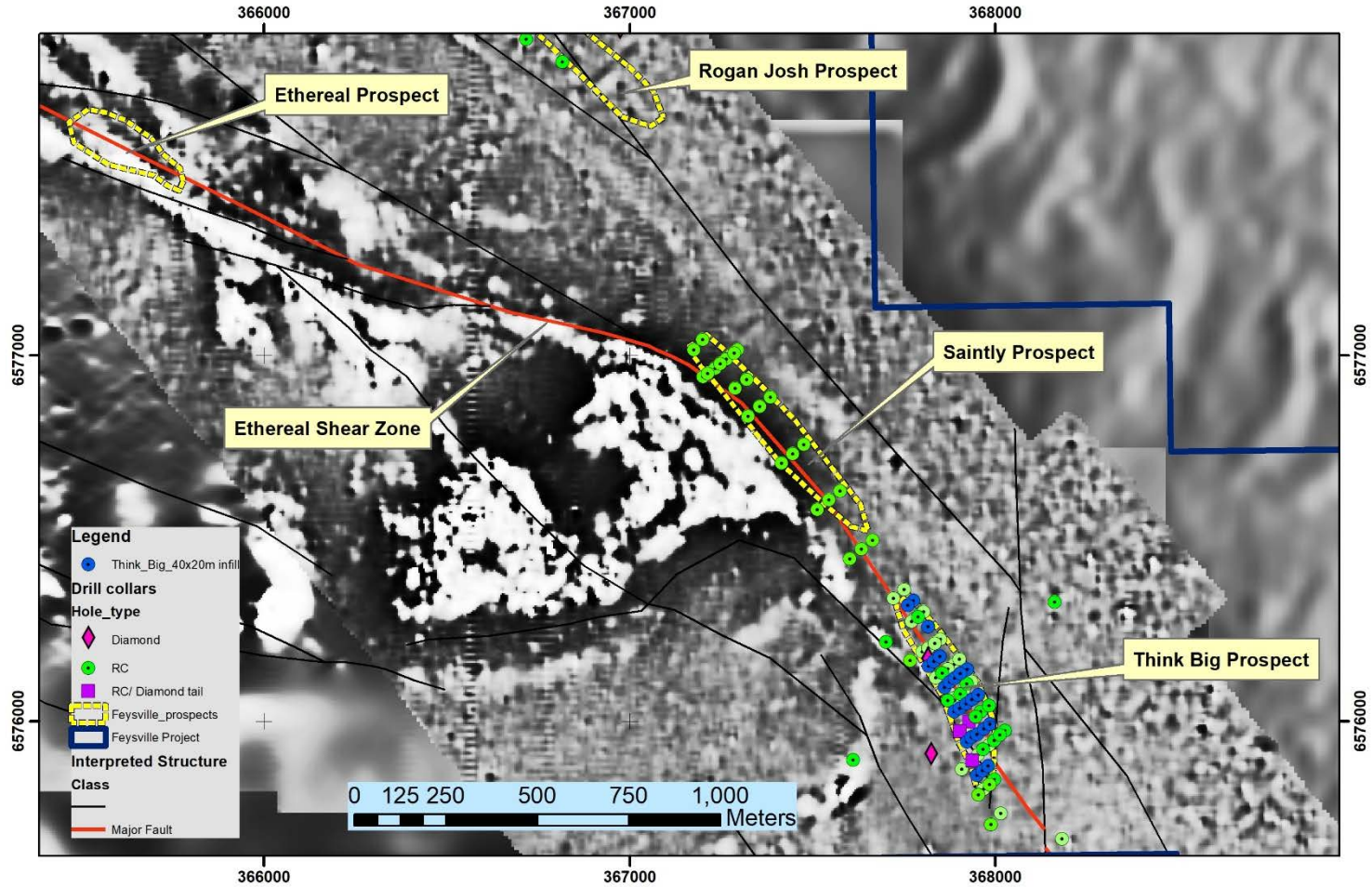


- Significant ground position held (12 kms of strike) in Australia's premier gold belt
- Belt includes:
  - Golden Mile (70 Moz) 14 kms to the north
  - New Celebration (3 Moz) 10 kms to the south
  - St Ives (+15 Moz) 60 kms to the south
- Each of these gold deposits are centred on the Boulder Lefroy fault, which passes along the western side of the Feysville Project for some 10 kms



# FEYSVILLE GOLD PROJECT

## TENEMENTS, STRUCTURE AND TARGETS





# FEYSVILLE GOLD PROJECT

## KEY PROSPECTS

PROSPECT	COMMENT
Think Big	<ul style="list-style-type: none"> <li>Main supergene-enriched higher grade zone approximately 300 metres long x 120 metres wide at a depth of 20 metres</li> <li>Sits atop variably-occurring lower grade zone of primary mineralisation</li> <li>Inaugural resource likely shortly</li> </ul>
Saintly	<ul style="list-style-type: none"> <li>Best intercepts 21 metres at 2.47 g/t Au from 20 metres and 12 metres @ 5.8 g/t from 16 metres</li> <li>Open to the north-west all the way to Ethereal Prospect</li> </ul>
Saintly South	<ul style="list-style-type: none"> <li>Best intercept 4 metres at 49.67 g/t Au from 68 metres</li> </ul>
Rogan Josh	<ul style="list-style-type: none"> <li>An at-surface target with a current size range of 300,000 to 350,000 tonnes @ 2.0 to 2.5 grams per tonne gold<sup>1</sup></li> <li>Open at depth and along strike</li> </ul>
Kamperman	<ul style="list-style-type: none"> <li>Best intercept 13 metres at 8.31 g/t Au from 24 metres to bottom of hole</li> </ul>
Dalray	<ul style="list-style-type: none"> <li>Best intercept 6 metres at 9.08 g/t Au</li> </ul>
Ethereal	<ul style="list-style-type: none"> <li>Best intercepts 10 metres at 9.1 g/t Au and 6 metres at 9.76 g/t Au</li> </ul>

<sup>1</sup>The potential quantity and grade is conceptual in nature, that there has been insufficient exploration in to estimate a Mineral Resource in these areas and that it is uncertain if further exploration will result in an increase in the estimated Mineral Resource.



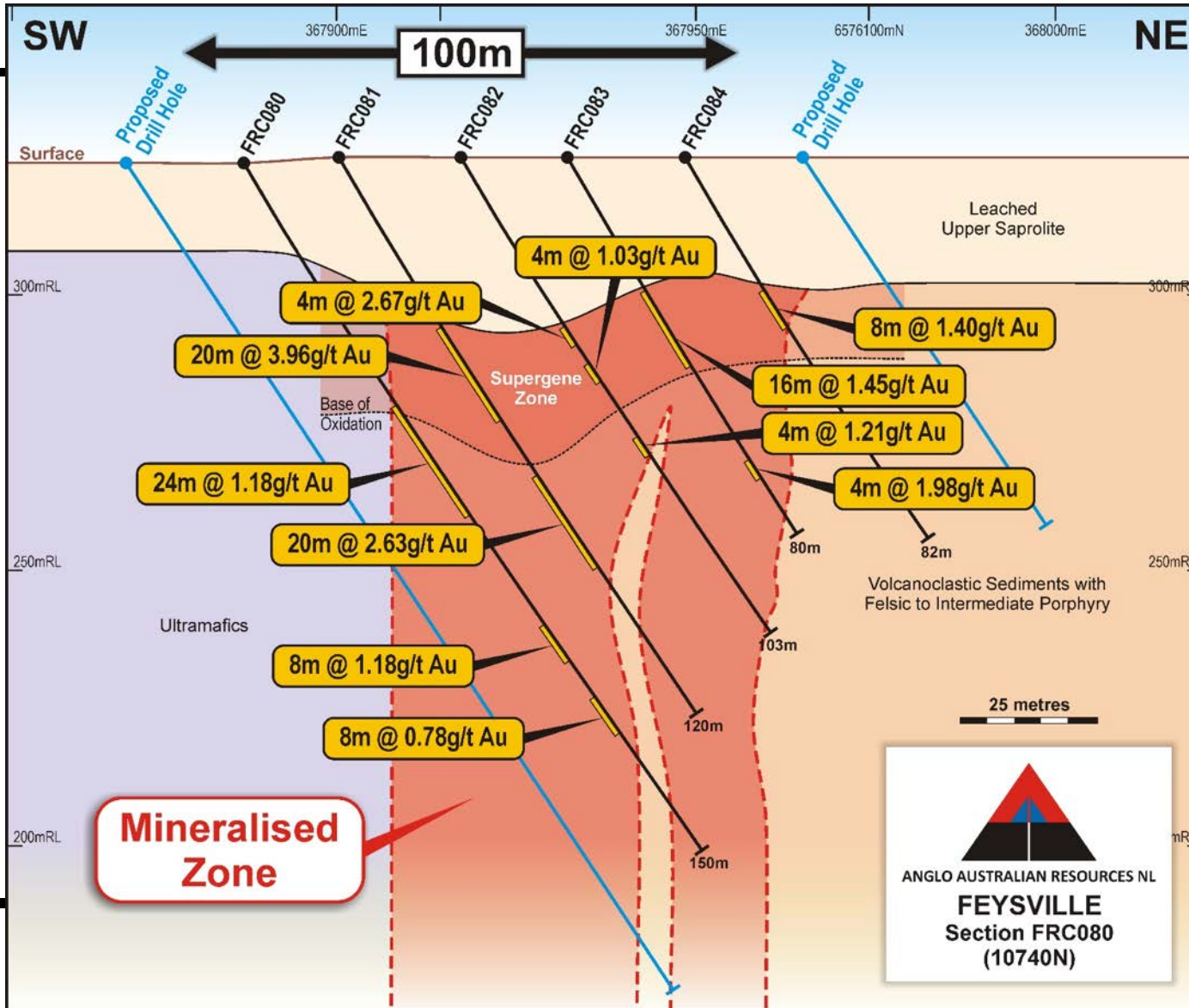
# FEYSVILLE GOLD PROJECT

---



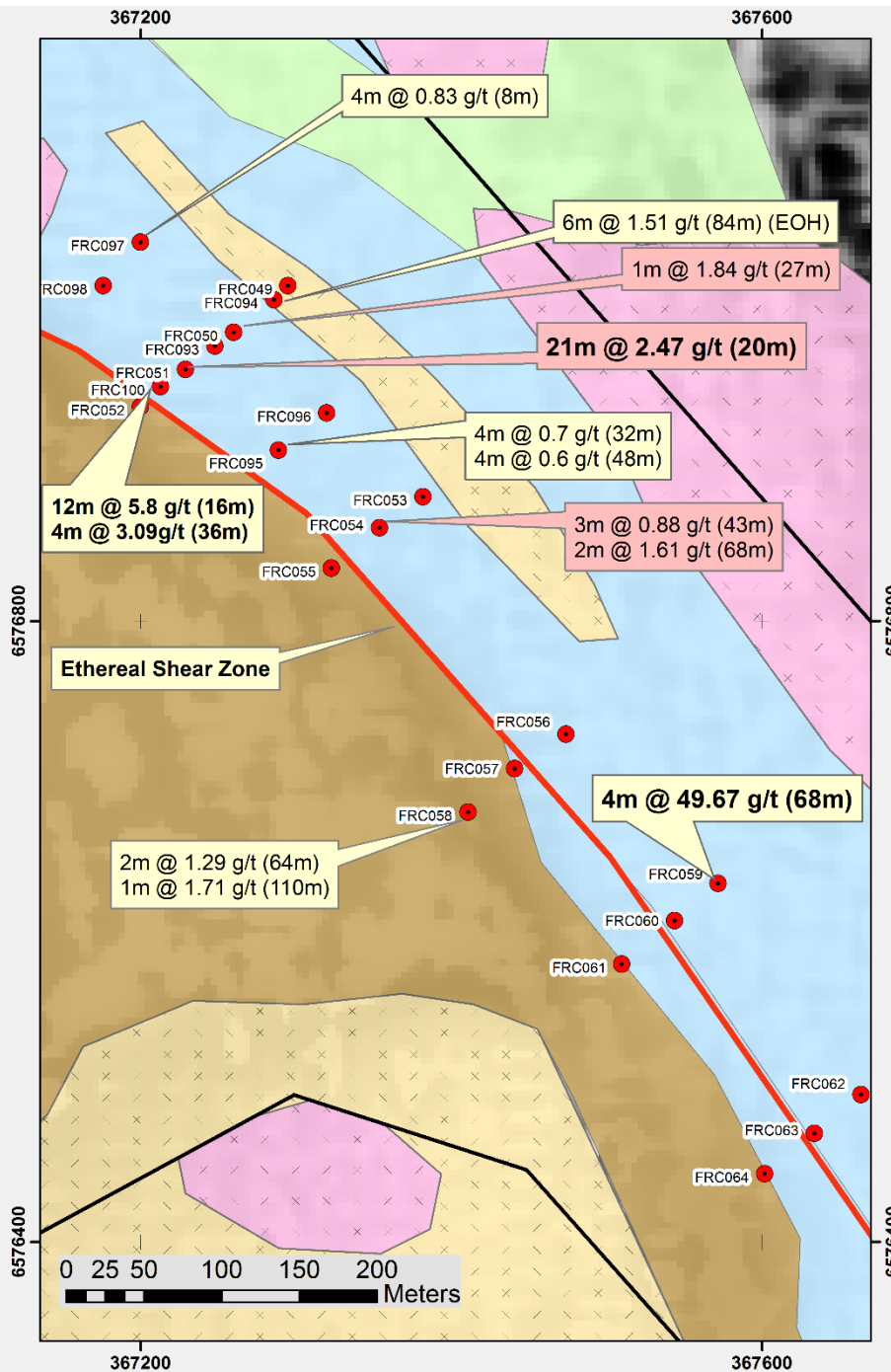


# FEYSVILLE GOLD PROJECT



THINK BIG PROSPECT

# FEYSVILLE GOLD PROJECT



## SAINTLY PROSPECT

- With only limited drilling, mineralised zone of 250 metres strike length
- Best intercepts 21 metres at 2.47 g/t Au from 20 metres and 12 metres @ 5.8 g/t from 16 metres
- Like Think Big, seems to involve higher grade supergene-enriched zone atop lower grade primary mineralisation
- Open to the NW for 1.5 kilometres, and to the SW

## SAINTLY SOUTH PROSPECT

- Best intercept 4 metres at 49.67 g/t Au from 68 metres

*Note: Most recent assay results shown in yellow boxes; previous results in red boxes.*

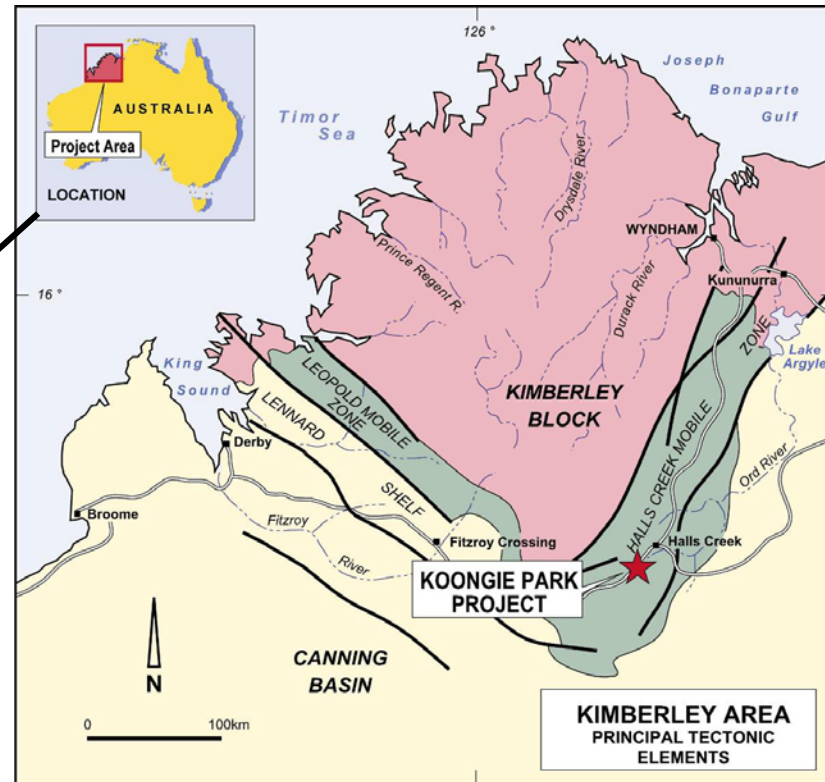




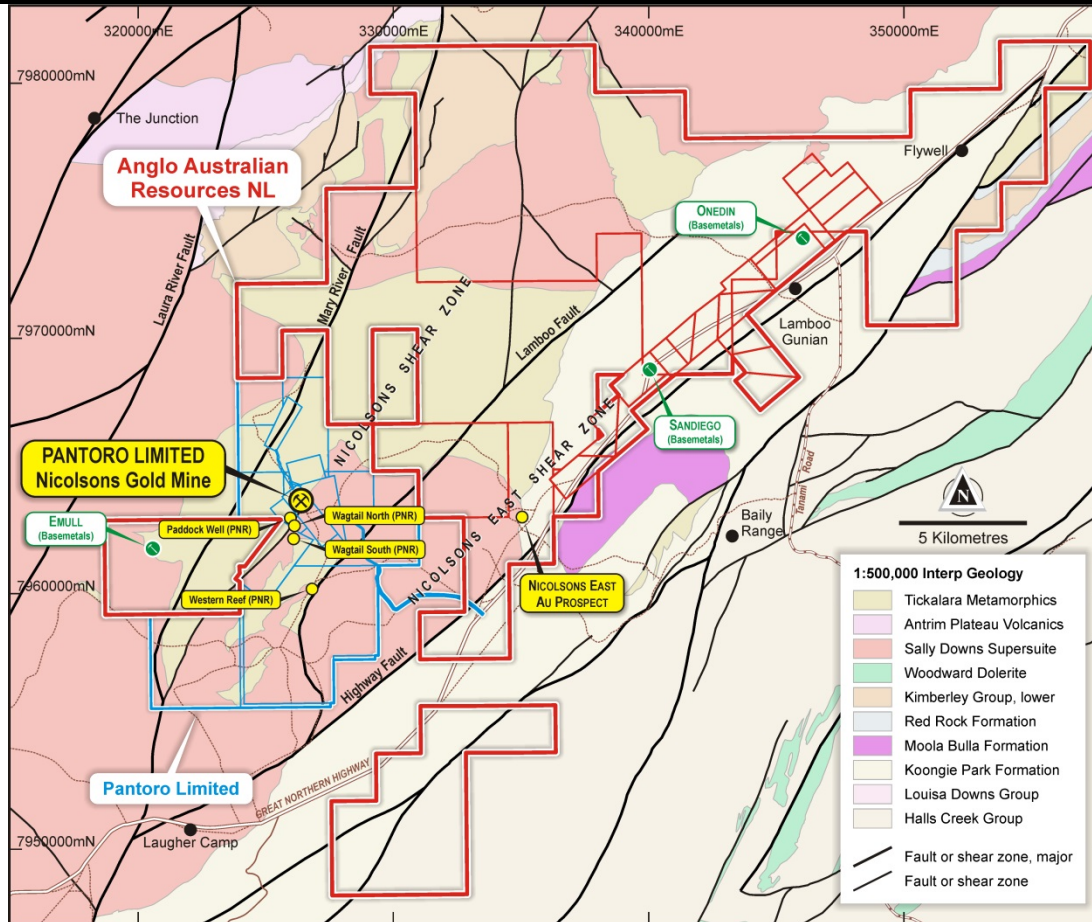
## **KOONGIE PARK – Halls Creek Core Shed**

# KOONGIE PARK

## LOCATION MAP



# KOONGIE PARK GOLD

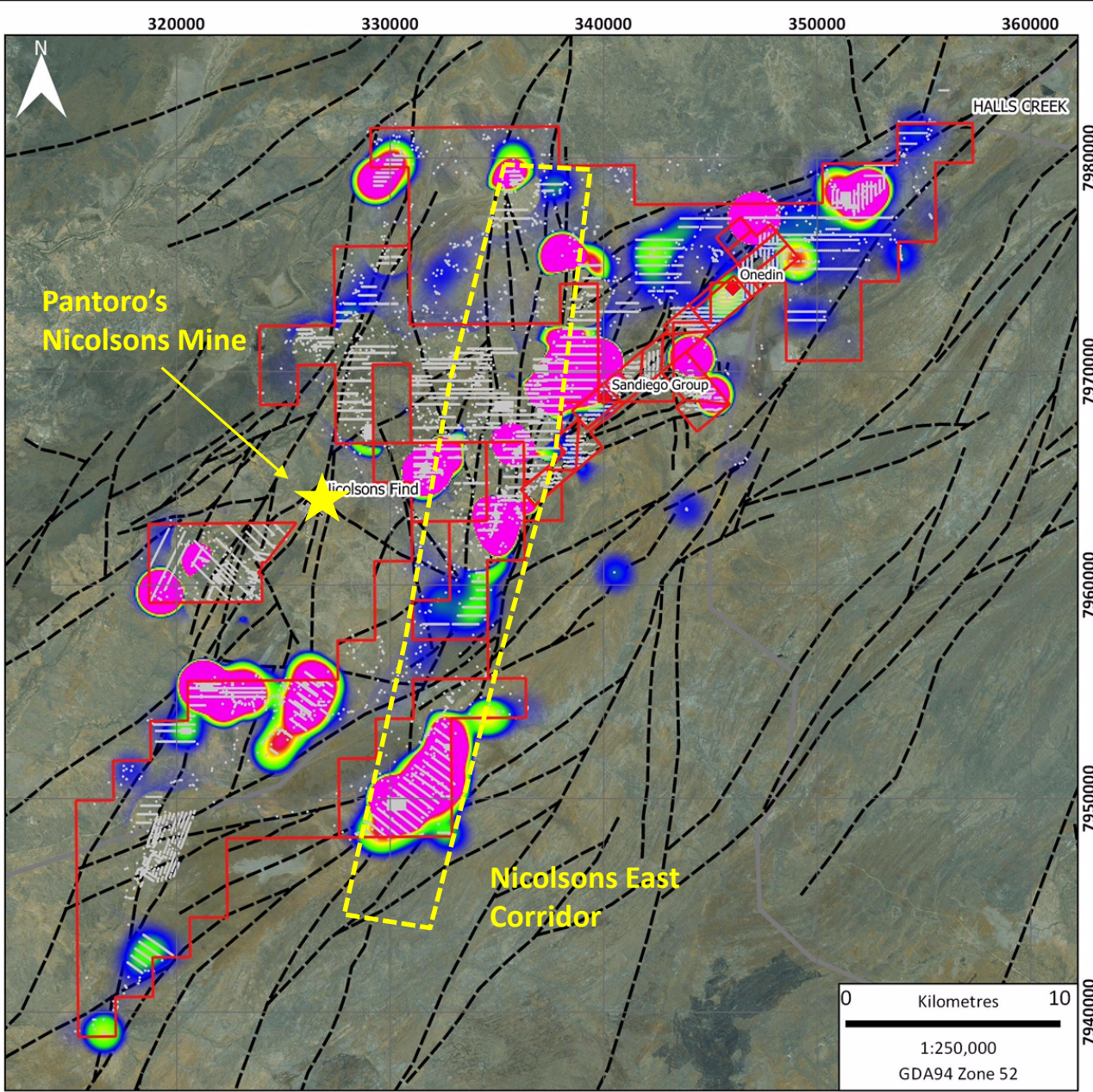


## GROUND POSITION

Significant ground position (red outline) held adjacent to that of ASX-listed Pantoro Limited (blue outline), currently producing approximately 55,000 oz Au per annum, and which currently has a market capitalisation of approximately \$275 million.







# KOONGIE PARK GOLD

**Koongie Park AOI - Au anomalous Zones on Esri Satellite Image**


NB. Anomalous (pink) zones are +0.5g/t Au. This does not take into account any sample contamination




# KOONGIE PARK GOLD

---


## PROSPECTIVITY




Along the 12 kilometres or so of the Nicolsons Shear Zone owned by Pantoro, that company has so far identified the relatively high grade Nicolsons, Rowdies, Wagtail Shift's Reef and Paddock Well Deposits. With its excellent record of discovery, highly likely that more deposits remain to be identified.



Similarly, Anglo Australian's ground hosts some 14 kilometres of the Nicolsons Shear Zone to the North of the Pantoro Ground which is yet to be drill tested.

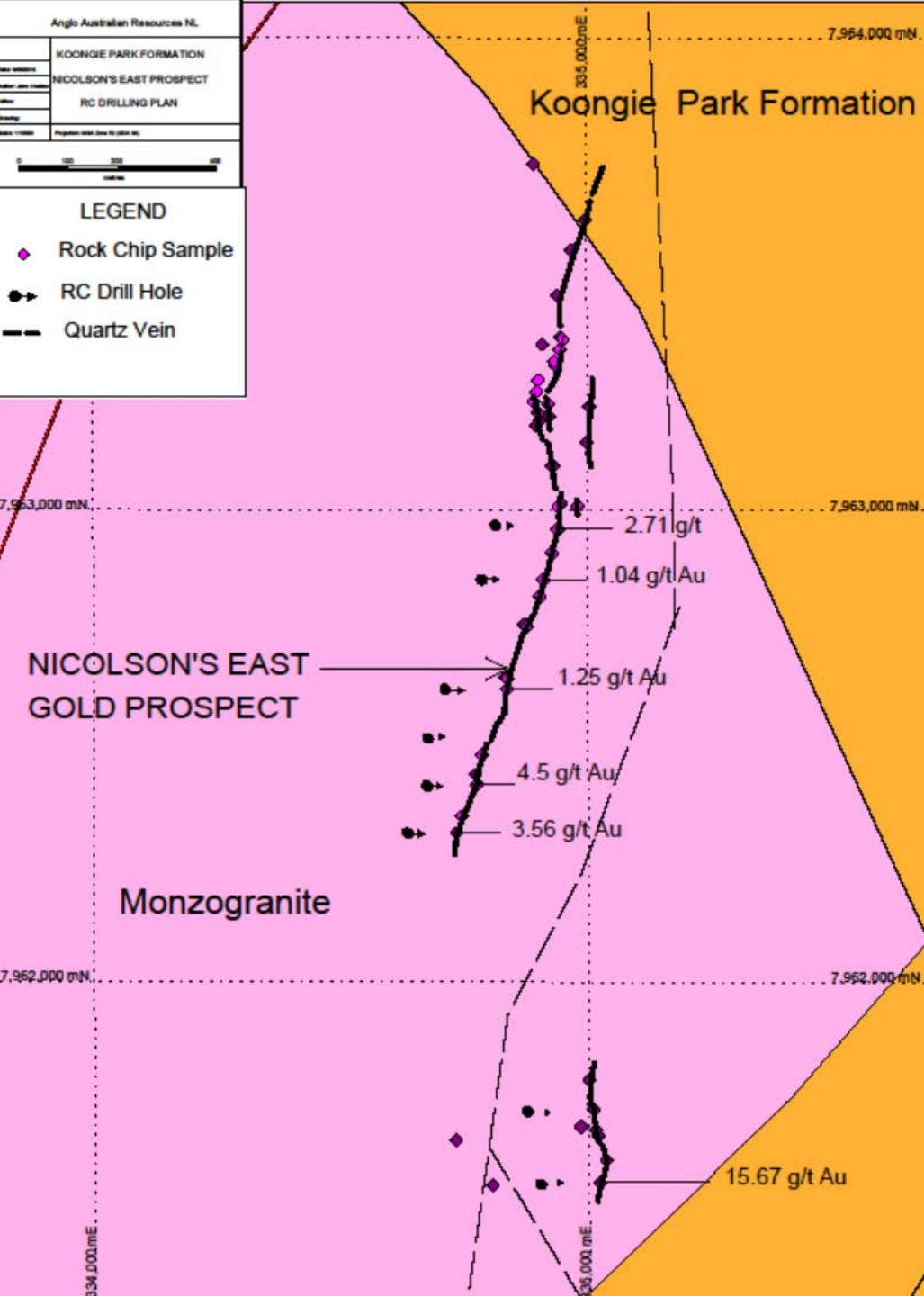


Anglo also hosts some 30 kilometres of strike along a separate yet-to-be-drill-tested shear zone approximately 8 kilometres to the east of and sub-parallel to the Nicolsons Shear Zone, upon which no drilling has been undertaken.



However, limited ground work has already identified a number of highly attractive targets, including the Nicolsons East Prospect which outcrops over approximately a two kilometre length and where a rock chip assay of 15.67 g/t Au has previously been recorded.





# KOONGIE PARK GOLD

## NICOLSONS EAST PROSPECT

- Anomalous gold results associated with NNE trending parallel quartz veins at Nicolson's East which outcrop over 2 kms
- Rock chip results of up to 4.5 g/t Au on main section, and up to 15.67 g/t Au to the south
- No drill holes
- Four priority targets (HW1-HW4) identified where NNE trending splay shears come off the main regional Highway shear
- Gold associated with gossanous quartz stockwork veins and vein sets



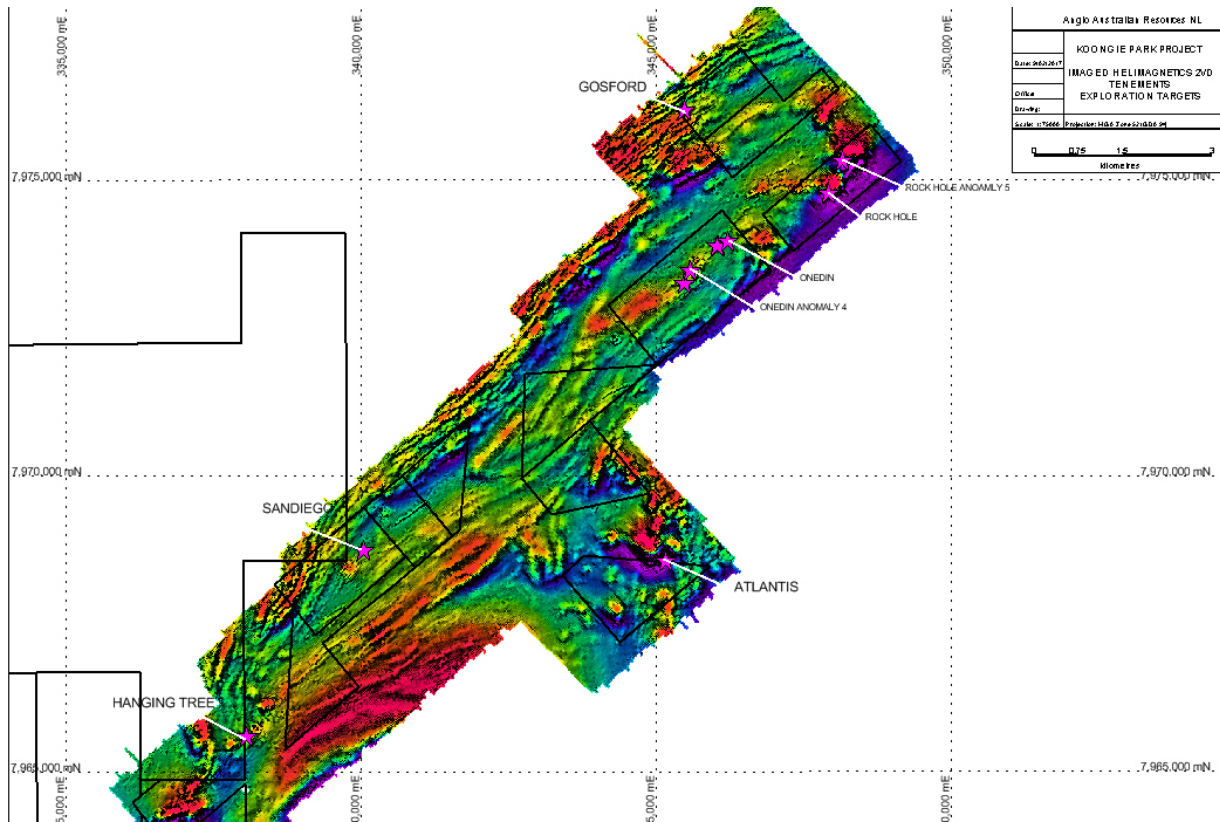
# KOONGIE PARK GOLD

## NICOLSONS EAST SHEAR ZONE



# KOONGIE PARK COPPER-ZINC PROJECT

## NEW PROSPECTIVE TARGET AREAS

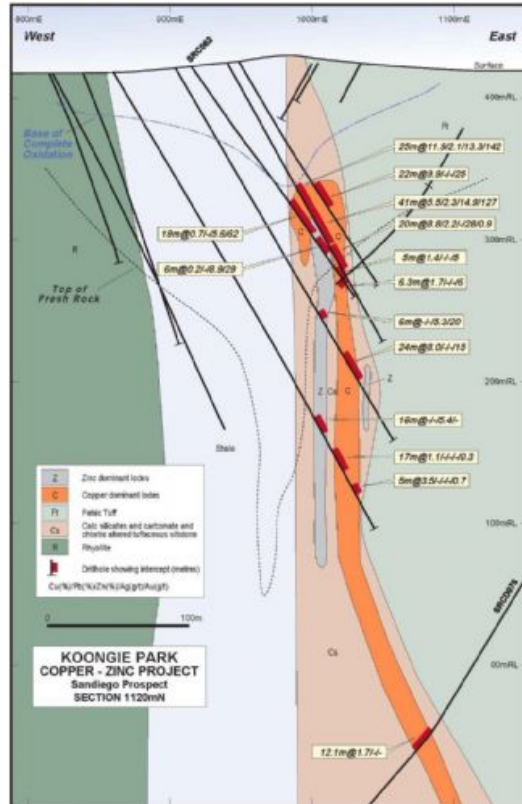


- Sandiego and Onedin mineralized zones represent fold hinges
- Distribution of metal in rock strongly suggests that the metal has been remobilized (which explains the Sandiego and Onedin accumulations)
- Within the Project area, airborne magnetics has identified a number of other potential hinge structures that are yet to be drill-tested

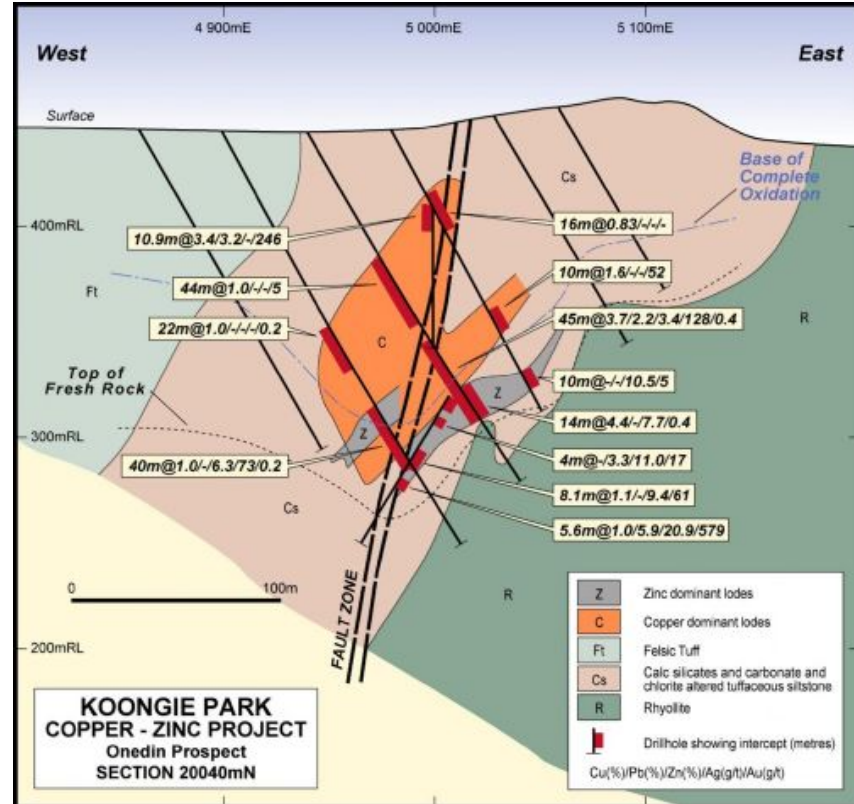


# KOONGIE PARK COPPER-ZINC PROJECT

## SANDIEGO AND ONEDIN DEPOSITS



Sandiego Section 1120mN



Onedin Section 20040mN



# KOONGIE PARK COPPER-ZINC PROJECT

---

## INDICATED MINERAL RESOURCES

### SANDIEGO DEPOSIT

Supergene Copper:	370,000 tonnes @ 4.0 % Cu, 2.7% Zn, 48g/t Ag and 0.29g/t Au
Copper Zone:	1,140,000 tonnes @ 2.8% Cu, 1.5% Zn, 12g/t Ag and 0.43g/t Au
Zinc Zone:	1,220,000 tonnes @ 0.2 % Cu, 7.0% Zn, 26g/t Ag and 0.13g/t Au
<b>Total Metal:</b>	<b>50,000 tonnes copper, 115,000 tonnes zinc, 2 million ounces of silver &amp; 26,000 ounces of gold, and a current market value of approximately \$500 million</b>

### ONEDIN DEPOSIT

Zinc Zone:	1,980,000 tonnes @ 6.25% Zn, 0.47% Cu, 32g/t Ag and 0.3g/t Au
Copper Zone:	2,500,000 tonnes @ 1.1% Cu, 0.8% Zn, 21g/t Ag and 0.3g/t Au
<b>Total Metal:</b>	<b>36,000 tonnes copper &amp; 140,000 tonnes zinc metal</b>

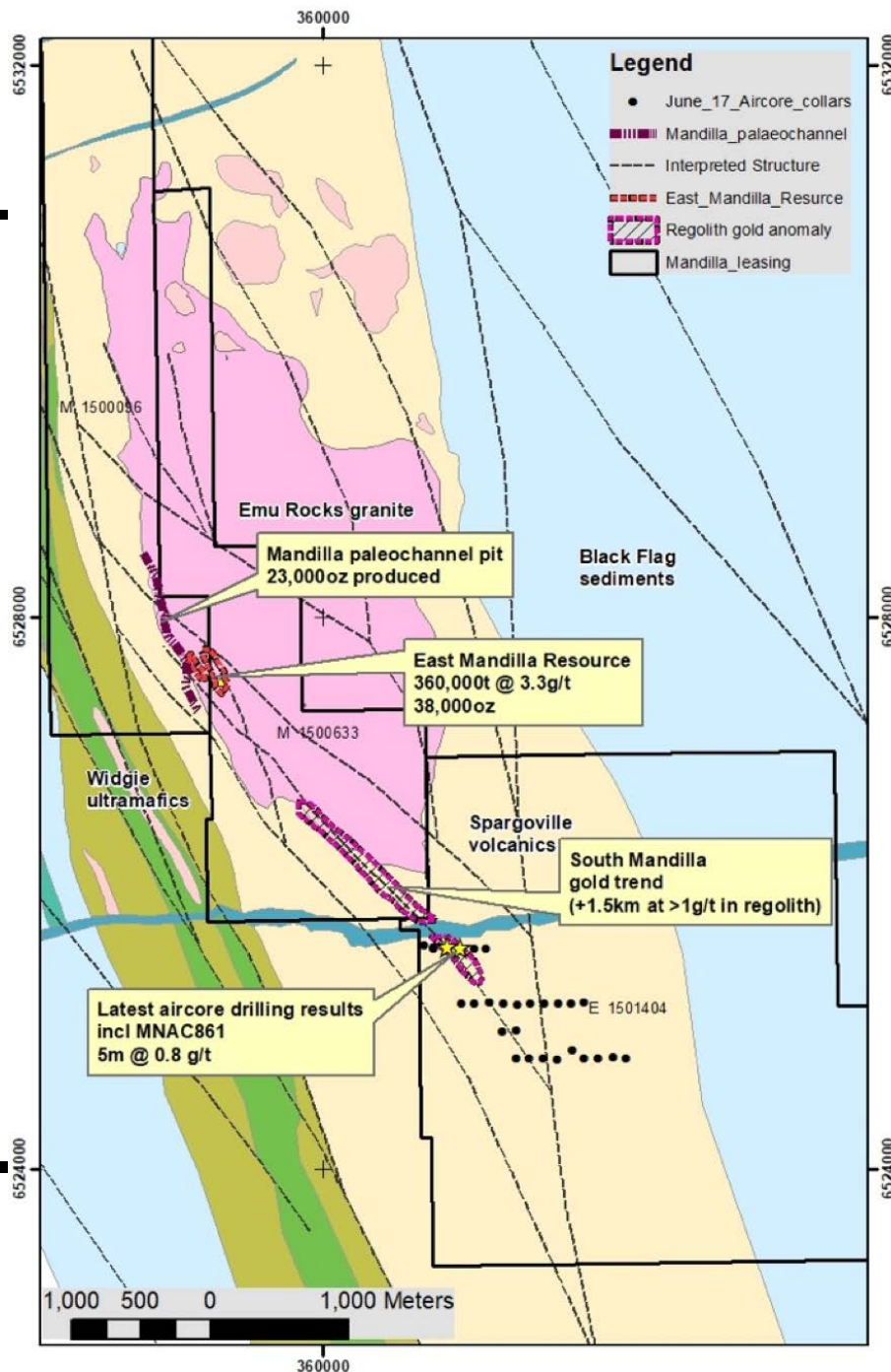




# MANDILLA GOLD PROJECT



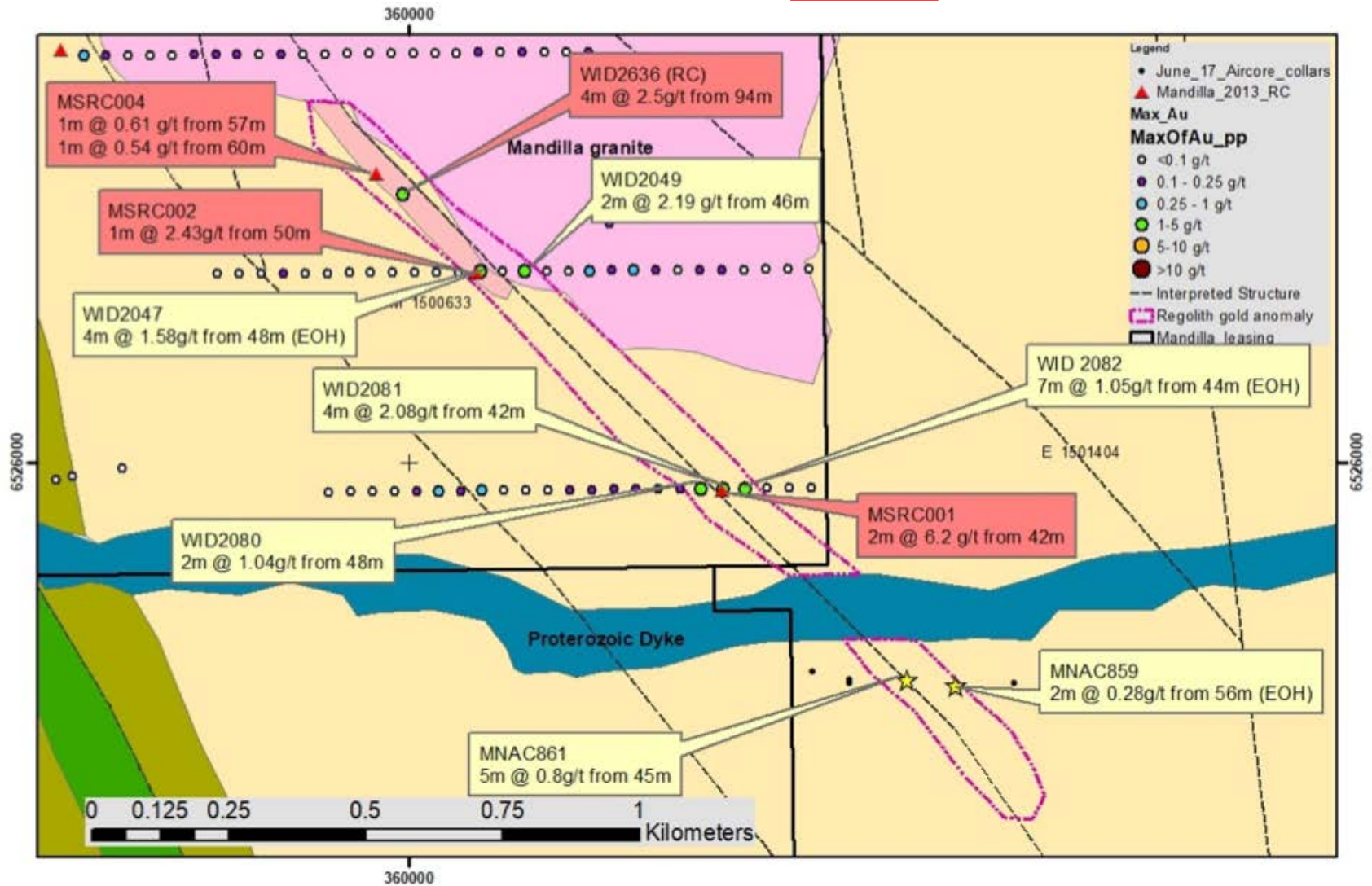
# MANDILLA GOLD PROJECT



- Located approximately 70 km south of Kalgoorlie and 20 km south-east of Kambalda
- From 2006 to 2007, Anglo Australian achieved production of 23,000 ounces Au from paleochannel
- Mandilla East represents an inferred bed-rock gold target of approximately 38,000 ounces Au
- Along strike, identified recently by three aircore lines, Mandilla South represents a 1.5 km long, up to 100 metre wide, target with gold grades exceeding 1 g/t Au in most holes, with indications of a supergene-enriched gold zone at a depth of approximately 40 to 50 metres



# MANDILLA GOLD PROJECT



# CONTACT DETAILS

---

## COMPANY SECRETARY

Graeme Smith  
Ground Floor  
63 Hay Street  
Subiaco WA 6008

Telephone: (08) 9382 8822  
Email: [gsmith@anglo.com.au](mailto:gsmith@anglo.com.au)

## CHAIRMAN

John L C Jones AM  
Unit 6, Level 2,  
2 Richardson Street  
West Perth WA 6005

Telephone: (08) 9322 4569  
Email: [info@anglo.com.au](mailto:info@anglo.com.au)

Information in this Report relating to geological data has been compiled by David Otterman who is an independent consultant from DW Otterman Exploration Consultant.

David Otterman:

Is a consultant to Anglo Australian Resources NL:

- Has relevant experience in relation to the mineralisation being reported on as to qualify as a Competent Person as defined by the *Australasian Code for Reporting of Exploration Results, Mineral Resources and Ore Reserves (JORC Code 2004 Edition)*;
- Is a Fellow of the Australasian Institute of Mining and Metallurgy (CP Geo) and is a Member of the Australian Institute of Geoscientists and has had more than thirty years experience in the field of activity reported herein; and
- Has consented in writing to the inclusion of this data.

Mineral resource information in relation to the Mandilla Project has been compiled by Andrew Bewsher an independent consultant from BM Geological Services, based on work by Peter Komyshan (formerly General Manager Exploration for Anglo Australian Resources NL) and BMGS geologists.

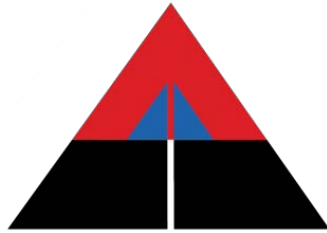
Andrew Bewsher is a member of the Australian Institute of Geoscientists and has more than five years relevant experience in relation to the mineralisation being

reported on as to qualify as a Competent Persons as defined by the Australasian Code for Reporting Identified Mineral Resources and Ore Reserves.

Mineral Resources for the Sandiego Deposit, Koongie Park Project have been estimated by David Slater, BAppSc, DipEd, MAusIMM, Specialist Consultant - Resources and Invar Kirchner, BSc(Hons), MAusIMM – Manager Resources with Coffey Mining Pty Ltd. Perth, WA. Both consultants have more than five years relevant experience in relation to the mineralisation being reported on to qualify as a Competent Person as defined by the Australasian Code for Reporting Identified Mineral Resources and Ore Reserves.

Mineral Resources for the Onedin Deposit, Koongie Park Project have been estimated under the overall supervision and direction of Gerry Fahey, MAusIMM and MAIG, of CSA Global. Participants included Peter Komyshan (geological interpretation) and David Williams, MAusIMM (Mineral Resource estimate). Mr Komyshan, Mr Williams and Mr Fahey are Competent Persons as defined by the Australasian Code for the Reporting of Exploration Results, Mineral Resources or Ore Reserves (JORC Code 2004 Edition).





**Anglo Australian Resources NL**