



23 May 2018

ASX Release

Minotaur acquires Cu prospects near Mt Isa

- Minotaur to purchase an extensive suite of copper-gold prospective tenements close to Mt Isa
- Acquisition enhances Minotaur's copper exploration portfolio
- Tenements host numerous known examples of copper mineralisation
- Multiple VTEM conductors already defined
- Several near drill-ready targets selected for refinement

Terms of Acquisition

Minotaur Exploration Ltd (ASX: MEP, 'Minotaur') has entered into a binding Tenement Sale Agreement ('TSA') with Syndicated Metals Limited (ASX: SMD, 'Syndicated') to acquire 100% of nine (9) Exploration Permit(s) for Minerals ('EPM', Table 1), collectively to be known as the **Highlands Project**. The tenements, covering 776km², are located 50km northeast of Mount Isa and 80km northwest of Cloncurry in northwest Queensland (Figure 1).

Consideration payable to Syndicated on Completion comprises A\$125,000 cash, plus fully paid ordinary shares in the capital of Minotaur to the value of \$275,000 based upon the 5-day VWAP at Completion. Completion occurs 5 days after satisfaction of typical Conditions Precedent.

Highlands Cu-Au Project

The Highlands Project straddles a major geological boundary between the Kalkadoon-Leichhardt Domain to the west and the Eastern Domain to the east (Figure 1), separated by the regional-scale Mt Remarkable and Gorge Creek Faults. Copper mineralisation is known to occur in the area, most notably at the Barbara copper-gold deposit owned and mined by CopperChem Pty Ltd. The Barbara deposit, located adjacent to the tenement group (Figure 2), contains a JORC 2012 Indicated and Inferred Resource of 4.75Mt grading 1.6% Cu, 0.15g/t Au, 2.76g/t Ag and 309g/t Co¹. Copper-gold mineralisation at Barbara is associated with pyrrhotite, an iron sulphide, as at FMR's Eloise copper-gold mine and Minotaur's intriguing Jericho prospect (55-60km southeast from Cloncurry) and forms part of the spectrum of emerging Iron Sulphide Copper Gold (ISCG) mineral systems in the district. Pyrrhotite is highly conductive and generates an electromagnetic (EM) response rendering it amenable to electrical geophysical search methods widely employed by Minotaur.

¹ Source: Syndicated Metals Ltd 2015 Annual Report, lodged with ASX 20 August 2015



Minotaur’s initial approach to exploration at Highlands will focus on ISCG style mineralisation associated with EM conductors, some of which are hosted in the same geological units hosting the Barbara deposit. Minotaur initiated field reconnaissance upon signing of the TSA. Company geoscientists are assessing VTEM targets reported previously by Syndicated, some of which are presented in Figure 2, so that a priority selection can be made for an initial round of ground based geophysical investigations, expected to proceed following Completion.

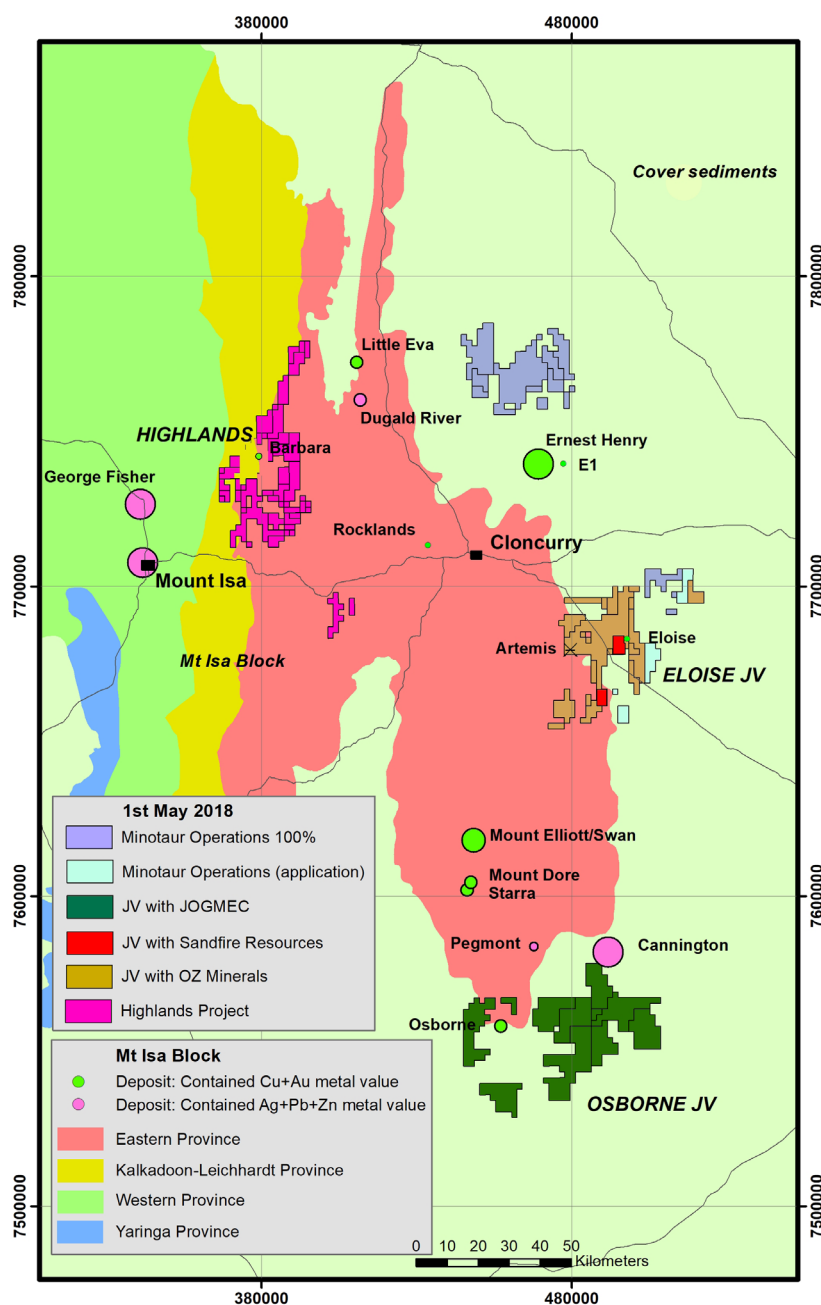


Figure 1: Location of Highlands tenements, east of Mt Isa, Qld and other Minotaur tenement clusters in the Cloncurry district

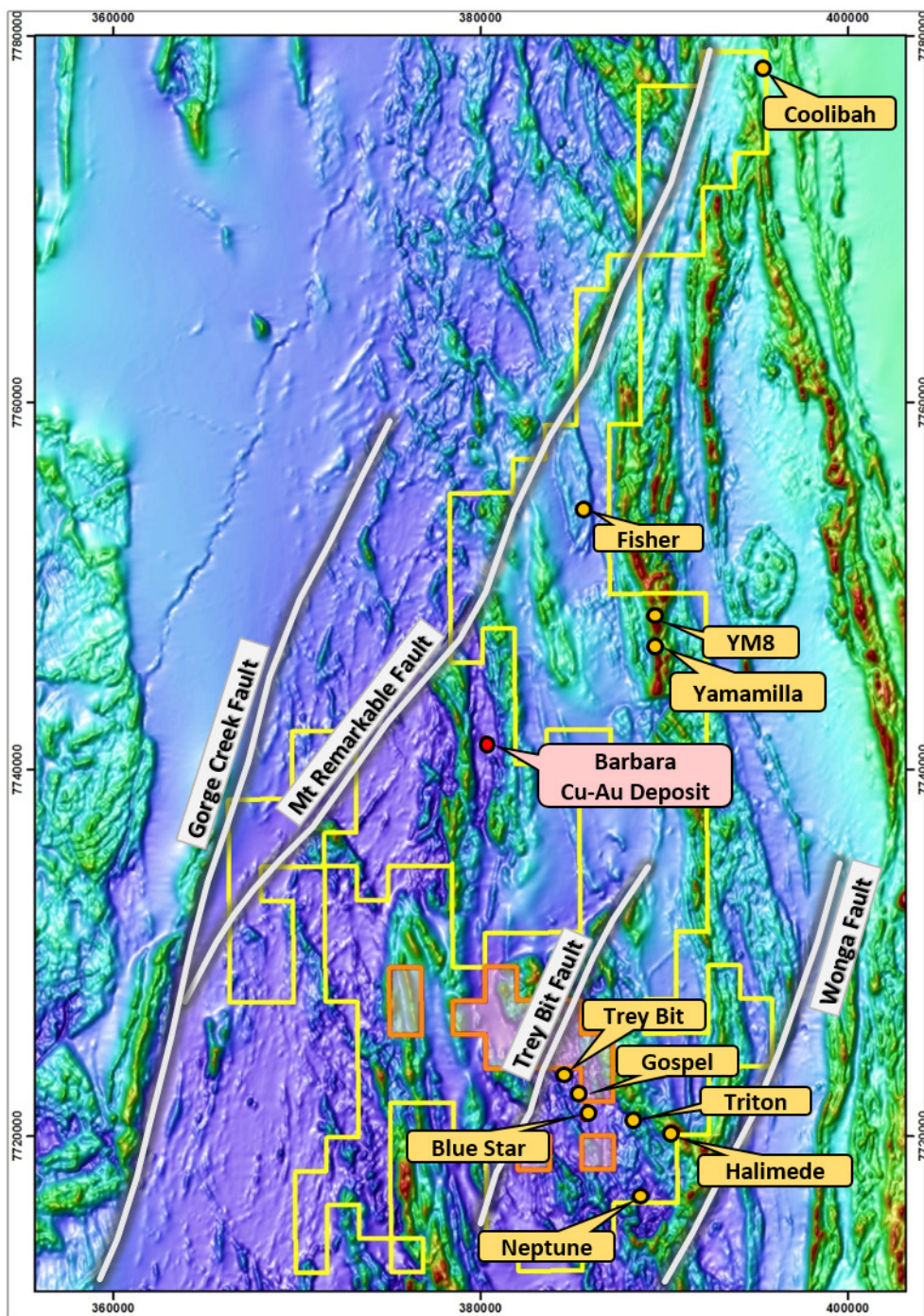


Figure 2: Magnetic image, Highlands tenements and key prospects (orange bounded areas owned by third party)

Minotaur Exploration's Methodology

Minotaur successfully combines surface geophysical tools and geological interpretation of obscured basement mineralisation in the Cloncurry copper belt of north-west Queensland, resulting in identification of 'blind' base metal occurrences. These techniques are to be applied to known, near-surface copper targets at Highlands enabling their refinement to drill ready status in the near-term.

Highlands topography, unlike Minotaur's Eloise and Osborne projects south of Cloncurry where prospective basement rocks are covered by younger sediments, is typically characterised by surface exposure of mineral prospective basement. This will allow easier identification and sampling of select rock units, avoiding the need to drill through thick surficial cover sequences. These attributes translate into faster, less expensive exploration processes than is otherwise the norm.

EPM No.	Name	EPM No.	Name
14281	Yamamilla	18429	Mt Remarkable Extension
16197	Blockade	18671	Bulonga
17638	Phillips Hill	19733	Mt Remarkable Consolidated
17914	Blockade East	25824	Mt Remarkable Inclusion
17947	Blockade East Extension		

Table 1: Highlands Tenements, subject of the Tenement Sale Agreement

COMPETENT PERSON'S STATEMENT

Information in this report that relates to Exploration Results is based on information compiled by Mr. Glen Little, who is a full-time employee of the Company and a Member of the Australian Institute of Geoscientists (AIG). Mr. Little has sufficient experience relevant to the style of mineralization and type of deposit under consideration and to the activity that he is undertaking to qualify as a Competent Person as defined in the 2012 Edition of the Australasian Code for Reporting of Exploration Results, Mineral Resources and Ore Reserves (JORC Code). Mr. Little consents to inclusion in this document of the information in the form and context in which it appears.

Andrew Woskett

Managing Director

Minotaur Exploration Ltd

T +61 8 8132 3400

www.minotaurexploration.com.au