

## DRILLING COMMENCES AT HIGH PRIORITY LITHIUM TARGET

---

### HIGHLIGHTS

- **Drilling program commenced at Shamva for a minimum of 3 holes and 300 metres at the Bonnyvale target.**
- **Flexibility to expand drilling program pending initial results.**
- **The aim of the drilling program is to identify thickness of lithium mineralisation and if it continues at depth. Recent surface rock samples over the Bonnyvale returned lithium grades of over 2% Li<sub>2</sub>O.**
- **Surface samples from nearby Loch Ness target delivered to assay labs.**



*Figure 1: Drilling rig at cleared drill pad in Bonnyvale*

Six Sigma Metals Limited (“SI6” or “the Company”) is pleased to announce that the drill pads have been cleared and drilling of the high priority lithium target at Bonnyvale has commenced. Drilling is expected to be completed by the end of July and assay results to be returned in August.

## Initial Drilling Program

As announced previously by SI6, an EIA report was completed for the initial drilling program at Bonnyvale and the Company mobilised expediently to ensure drilling commenced as soon as possible.

The initial drilling program will be conducted as a first pass to identify if lithium mineralisation continues at depth and will target the Bonnyvale pegmatite where 61 surface rock samples showed lithium mineralisation at levels over 2% Li<sub>2</sub>O (as announced on ASX 6 June 2018).

The drilling program will comprise 3 holes designed to intersect thick outcropping lithium-mineralised pegmatite as identified from surface rock samples (see ASX announcement 6 June 2018) and field investigations by the Directors of SI6. The area targeted by the 3 holes shows a prominent pegmatite body containing a long line of historic trenches and underground workings that display coarse-grained lithium host minerals such as spodumene, petalite and lepidolite.

The program aims to test the morphology, thickness and depth extent of the Bonnyvale pegmatite body.

Flexibility has been maintained to expand drilling program pending results.

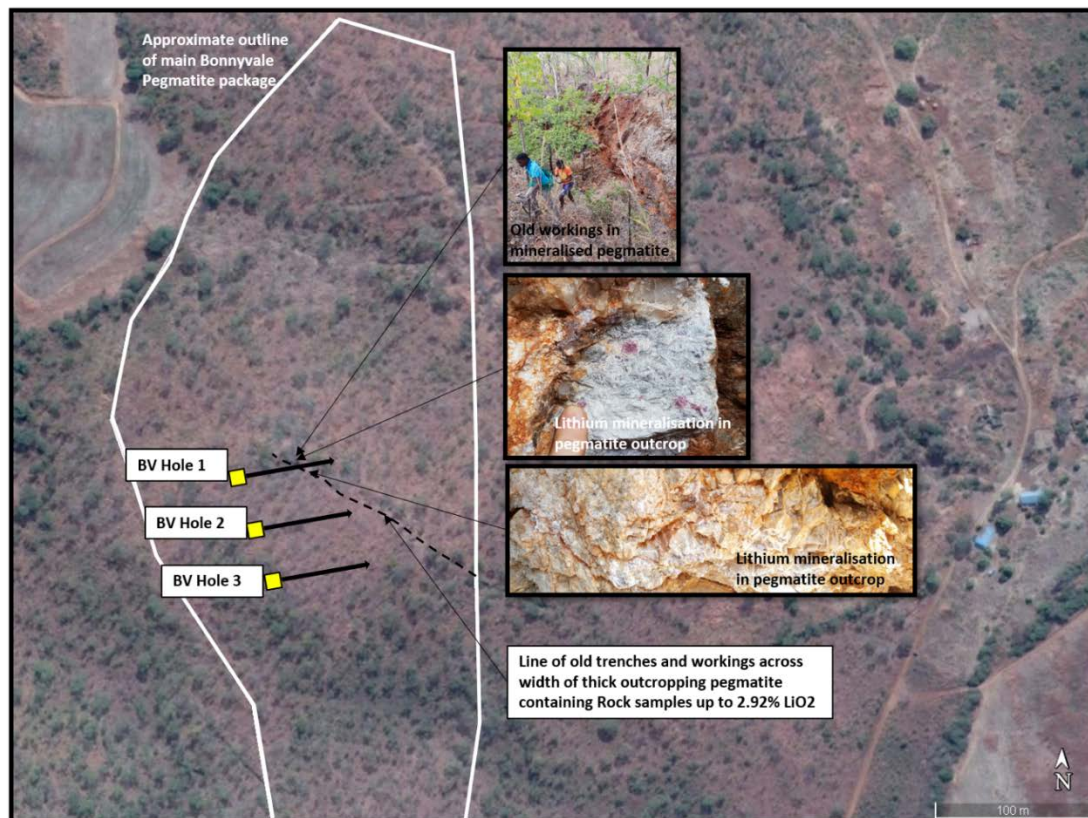


Figure 2: Plan view showing proposed location of 3 RC holes (Yellow Boxes) targeting thick outcropping lithium-mineralised pegmatite as identified from surface rock samples (see ASX announcement 06 June 2018) and field investigations by the Directors of SI6.

## Loch Ness Lithium Samples Update

As part of a recent sample program, 75 surface rock samples were taken and have been subsequently delivered for assay. Similar to the Bonnyvale target, the Loch Ness target is showing a prominent pegmatite body with historical trenches.

SI6 expects the assay results to be returned in August.

**Edwin Bulseco**

**Chairman**

### **Competent Person statement**

*The information in this report that relates to Exploration Results is based on, and fairly represents, information and supporting documentation compiled by Mirrorplex staff on site and provided to Mr Steve Groves who is a Member of The Australian Institute of Geoscientists. Mr Groves is Director of, and a consulting geologist to SI6 and has previously been employed as the Exploration Manager at SI6. Mr Groves has sufficient experience which is relevant to the style of mineralisation and type of deposit under consideration and to the activity which he is undertaking to qualify as a Competent Person as defined in the 2012 edition of the "Australasian Code for Reporting of Exploration Results, Mineral Resources and Ore Reserves". Mr Groves consents to the inclusion in this report of the matters based on his information in the form and context in which it appears.*